

CATALOGUE NO. 8635.2
EMBARGOED UNTIL 11:30 A.M. 23 JUNE 1994

TOURIST ACCOMMODATION, VICTORIA, MARCH QUARTER 1994

MAIN FEATURES

MARCH QUARTER 1994
COMPARED WITH
MARCH QUARTER 1993

HOTELS, MOTELS AND GUEST HOUSES

- Rooms available increased by 0.1 per cent from 29,944 to 29,988 and bed spaces increased by 0.5 per cent to 82,681.
- Room nights occupied increased by 5.4 per cent to 1,372,663 and the room occupancy rate increased from 48.3 per cent to 50.9 per cent.
- By star grading, the highest room occupancy rate at 70.2 per cent was achieved by five star rated establishments compared with rates of 65.7 per cent for four star establishments and 50.7 per cent for three star establishments.
- Guest nights increased by 4.7 per cent to 2,343,159 and the bed occupancy rate increased from 30.2 per cent to 31.5 per cent.
- Guest arrivals at hotels, motels and guest houses increased by 5.5 per cent to 1,254,700 while the average length of stay was unchanged at 1.9 days.
- Takings from accommodation increased by 7.3 per cent from \$107.6m to \$115.5m and average takings per room night occupied rose from \$83 to \$84.

HOLIDAY FLATS, UNITS AND HOUSES

- The number of units, etc. available for short-term letting increased by 7.9 per cent from 3,311 to 3,571 while unit nights occupied increased by 6.9 per cent to 154,142.
- The unit occupancy rate increased from 48.6 per cent to 49.0 per cent.
- Unit lettings increased from 31,388 to 36,560 while the average length of stay decreased from 4.6 days to 4.2 days.
- Accommodation takings increased by 9.1 per cent from \$10.4m to \$11.4m and average takings per unit night occupied increased from \$72 to \$74.

CARAVAN PARKS (SHORT-TERM AND LONG-TERM)

- Caravan park capacity available increased by 1.4 per cent from 66,705 to 67,647 sites and cabins, etc. of which 6,575 sites, etc. (9.7 per cent) were occupied by long-term guests, 15,361 sites (22.7 per cent) were permanently reserved but only casually occupied by their tenants and an average of 8,979 sites (13.3 per cent) were occupied by other short-term guests.
- Site nights occupied increased by 2.1 per cent to 2,782,350 and the site occupancy rate rose by 0.3 percentage points to 45.7 per cent.
- Accommodation takings increased by 5.6 per cent from \$22.1m to \$23.3m with average takings per site night occupied unchanged at \$8.

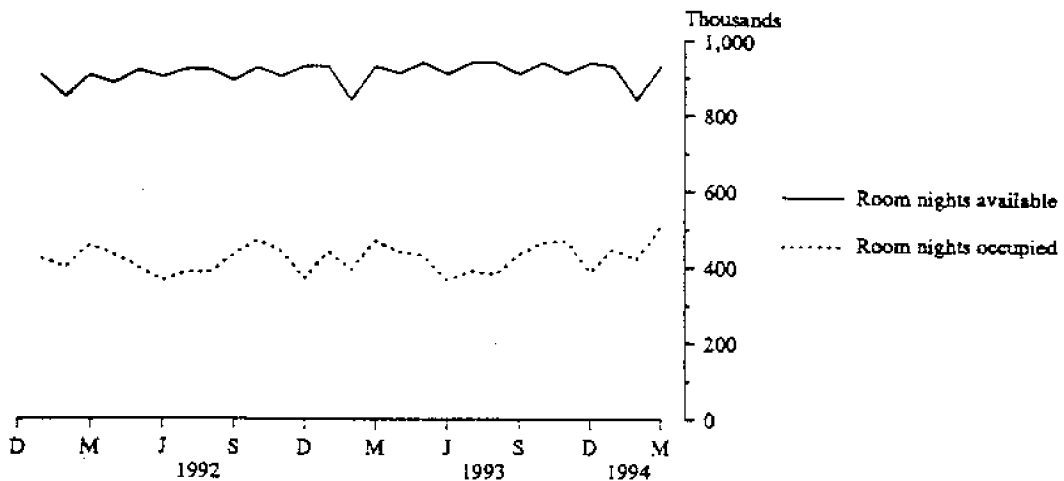
VISITOR HOSTELS

- Bed spaces available increased by 4.7 per cent from 2,663 to 2,789.
- Guest nights occupied rose by 7.3 per cent to 117,675 and the bed occupancy rate increased from 46.0 per cent to 46.9 per cent.
- Guest arrivals increased from 39,393 to 47,108 while the average length of stay decreased from 2.8 days to 2.5 days.
- Accommodation takings rose from \$1.2m to \$1.5m while average takings per guest night increased from \$11 to \$13.

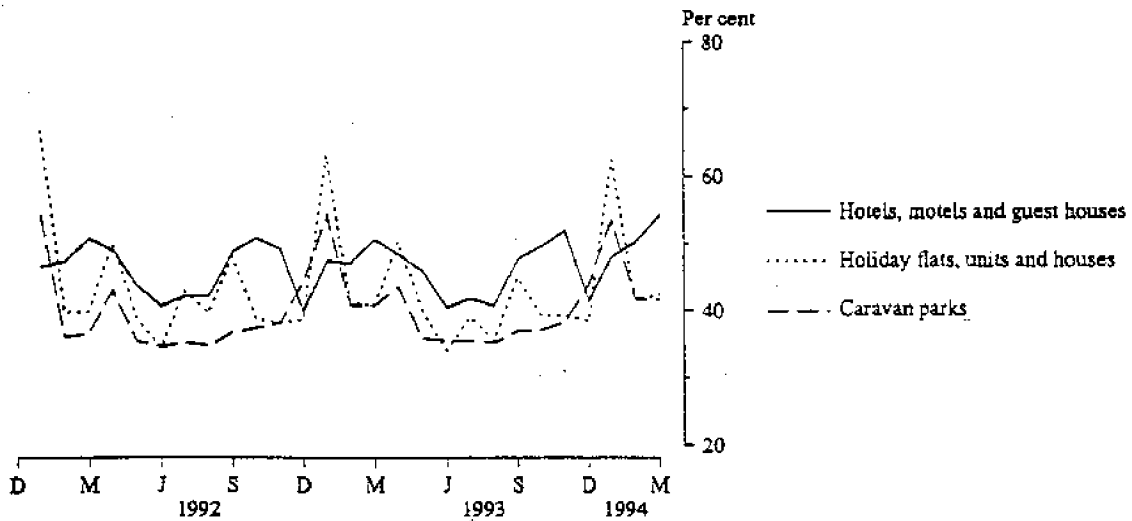
INQUIRIES

- *for further information about statistics in this publication and the availability of related unpublished statistics, contact Sally Barrett on 008 077285 or any ABS office.*
 - *for information about other ABS statistics and services, refer to the back page of this publication.*
- *****

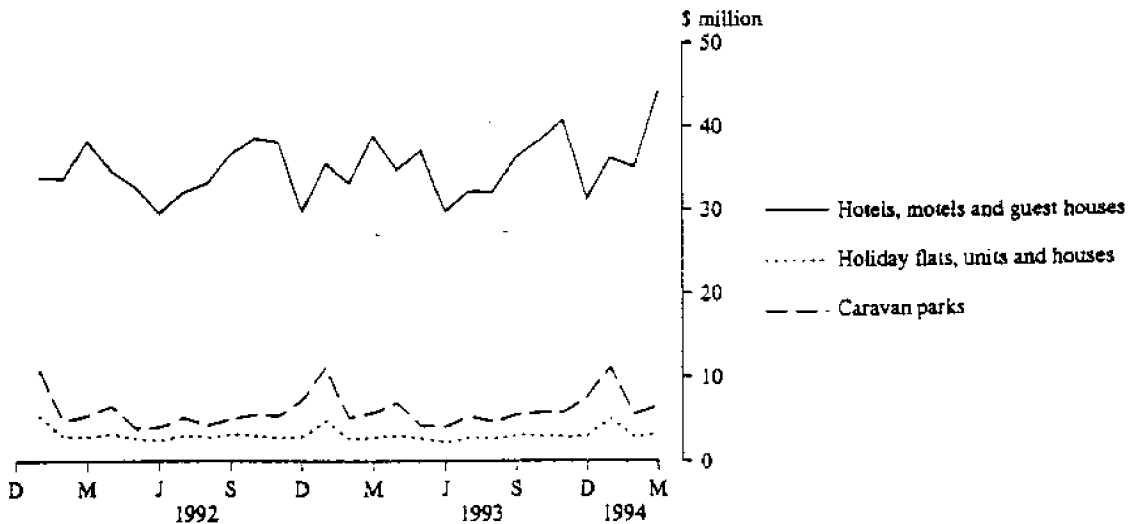
**MONTHLY ROOM NIGHTS AVAILABLE AND OCCUPIED:
HOTELS, MOTELS AND GUEST HOUSES,
VICTORIA**



**MONTHLY OCCUPANCY RATES,
VICTORIA**



**MONTHLY TAKINGS FROM ACCOMMODATION,
VICTORIA**



CONTENTS

<i>Table</i>		<i>Page</i>
-	Main features	1
-	Diagrams	2
1	Summary of hotels, motels and guest houses with facilities, Victoria	4
2	Summary of caravan parks, Victoria	5
3	Summary of holiday flats, units and houses, Victoria	6
4	Summary of visitor hostels, Victoria	6
5	Hotels, motels and guest houses with facilities by star grading, Melbourne City, Melbourne Statistical Division and Victoria	7
6	Hotels, motels and guest houses with facilities by statistical division, Victoria	9
7	Hotels, motels and guest houses with facilities: Statistical divisions and selected statistical local areas, Victoria	12
8	Holiday flats, units and houses by statistical division, Victoria	16
9	Caravan parks: Statistical divisions and selected statistical local areas, Victoria	18
10	Caravan parks by statistical division, Victoria	22
11	Visitor hostels by statistical division, Victoria	25
-	Explanatory Notes	26
-	Reference maps – statistical divisions of Victoria and statistical local areas of Melbourne Statistical Division	30

TABLE 1 — SUMMARY OF HOTELS, MOTELS AND GUEST HOUSES WITH FACILITIES, VICTORIA (a)

Particulars	Unit	Quarter ended				Year ended			
		December	March	June	September	December	March	March	March
		1992	1993	1993	1993	1993	1994	1993	1994
LICENSED HOTELS WITH FACILITIES									
Establishments	No.	210	210	215	212	199	196
Guest rooms and spaces	No.	9,637	9,619	9,815	9,934	10,279	10,152
	No.	22,990	22,907	23,615	23,764	24,793	24,772
Employment (persons)	No.	9,407	9,603	9,269	9,138	9,699	9,908
Room nights occupied	'000	443.1	451.0	424.1	428.5	532.1	535.2	1,694.7	1,919.9
Room occupancy rate	per cent	50.2	52.1	47.5	47.0	56.3	58.6	49.3	52.4
Guest nights	'000	692.0	713.8	650.2	654.6	827.6	833.7	2,674.4	2,966.0
Room occupancy rate	per cent	32.9	34.6	30.3	30.0	36.3	37.4	32.4	33.6
Guest arrivals	'000	341.0	317.5	318.5	314.2	393.2	375.0	1,237.9	1,400.8
Average length of stay	days	2.0	2.2	2.0	2.1	2.1	2.2	2.2	2.1
Receipts from accommodation	\$'000	50,080	50,070	47,190	46,741	58,112	59,753	189,326	211,795
MOTELS AND GUEST HOUSES WITH FACILITIES									
Establishments	No.	829	830	836	831	826	821
Guest rooms and spaces	No.	20,358	20,325	20,463	20,382	19,986	19,836
	No.	59,452	59,376	59,979	59,806	58,439	57,909
Employment (persons)	No.	7,117	7,270	6,839	6,825	6,501	6,585
Room nights occupied	'000	838.7	851.0	811.1	774.9	792.3	837.5	3,284.1	3,215.8
Room occupancy rate	per cent	44.9	46.6	43.6	41.4	43.1	46.9	44.2	43.7
Guest nights	'000	1,456.2	1,523.7	1,403.4	1,352.3	1,384.6	1,509.5	5,755.4	5,649.8
Room occupancy rate	per cent	26.7	28.5	25.7	24.6	25.8	29.0	26.6	26.2
Guest arrivals	'000	854.2	871.4	813.0	791.9	834.4	879.7	3,328.1	3,319.0
Average length of stay	days	1.7	1.7	1.7	1.7	1.7	1.7	1.7	1.7
Receipts from accommodation	\$'000	56,418	57,563	54,567	53,895	52,390	55,701	223,674	216,554
TOTAL HOTELS, MOTELS AND GUEST HOUSES WITH FACILITIES									
Establishments	No.	1,039	1,040	1,051	1,043	1,025	1,017
Guest rooms and spaces	No.	29,995	29,944	30,278	30,316	30,265	29,988
	No.	82,442	82,283	83,594	83,570	83,232	82,681
Employment (persons)	No.	16,524	16,873	16,108	15,963	16,200	16,493
Room nights occupied	'000	1,281.8	1,302.0	1,235.2	1,203.4	1,324.4	1,372.7	4,978.8	5,135.7
Room occupancy rate	per cent	46.6	48.3	44.9	43.2	47.6	50.9	45.9	46.6
Guest nights	'000	2,148.2	2,237.6	2,053.6	2,006.8	2,212.1	2,343.2	8,429.8	8,615.8
Room occupancy rate	per cent	28.4	30.2	27.0	26.2	28.9	31.5	28.2	28.4
Guest arrivals	'000	1,195.2	1,188.9	1,131.5	1,106.0	1,227.6	1,254.7	4,566.0	4,719.8
Average length of stay	days	1.8	1.9	1.8	1.8	1.8	1.9	1.8	1.8
Receipts from accommodation	\$'000	106,498	107,633	101,757	100,636	110,502	115,454	413,001	428,349

From December quarter 1993, establishments with fewer than 5 rooms have been formally excluded from the scope of this collection. See Explanatory Note 2 (page 26).

TABLE 2 — SUMMARY OF CARAVAN PARKS, VICTORIA

Particulars	Unit	Quarter ended				Year ended			
		December 1992	March 1993	June 1993	September 1993	December 1993	March 1994	March 1993	March 1994
SHORT-TERM CARAVAN PARKS									
Establishments	No.	442	444	445	436	442	441
Capacity									
On-site vans	No.	2,373	2,234	2,232	2,084	2,046	2,055
Other powered sites	No.	35,989	36,228	36,529	36,064	36,246	36,452
Unpowered sites	No.	12,970	13,313	13,349	13,104	13,064	13,261
Cabins, etc.	No.	2,150	2,160	2,241	2,170	2,245	2,284
Total capacity	No.	53,482	53,935	54,351	53,422	53,601	54,052
Sites occupied by long-term guests	No.	1,978	1,909	1,999	1,814	1,854	1,849
Other sites permanently reserved (a)	No.	13,399	14,444	14,002	13,847	14,425	14,976
Employment (persons)	No.	1,464	1,403	1,351	1,321	1,487	1,433
Site nights occupied (a)	'000	1,384.8	2,172.3	1,806.3	1,665.5	1,899.3	2,204.2	7,433.9	7,575.4
Site occupancy rate (a)	per cent	38.3	44.3	36.5	34.0	38.7	45.3	37.8	38.6
Takings from accommodation	\$'000	12,975	16,443	10,038	9,914	13,469	17,183	48,570	50,604
LONG-TERM CARAVAN PARKS									
Establishments	No.	149	151	147	157	159	158
Capacity									
On-site vans	No.	1,862	1,860	1,806	1,924	1,913	1,940
Other powered sites	No.	8,121	8,305	8,127	8,735	8,689	8,669
Unpowered sites	No.	1,931	1,852	1,781	2,044	2,066	2,066
Cabins, etc.	No.	690	753	770	881	908	920
Total capacity	No.	12,604	12,770	12,484	13,584	13,576	13,595
Sites occupied by long-term guests	No.	4,488	4,584	4,559	4,591	4,637	4,726
Other sites permanently reserved (a)	No.	477	417	436	390	405	385
Employment (persons)	No.	450	463	435	491	510	484
Site nights occupied (a)	'000	541.1	552.5	517.3	538.5	550.4	578.1	2,169.5	2,184.3
Site occupancy rate (a)	per cent	46.7	48.1	45.5	43.1	44.1	47.2	47.1	45.0
Takings from accommodation	\$'000	5,193	5,626	5,203	5,387	5,628	6,116	20,439	22,333
TOTAL CARAVAN PARKS									
Establishments	No.	591	595	592	593	601	599
Capacity									
On-site vans	No.	4,235	4,094	4,038	4,008	3,959	3,995
Other powered sites	No.	44,110	44,533	44,656	44,799	44,935	45,121
Unpowered sites	No.	14,901	15,165	15,130	15,148	15,130	15,327
Cabins, etc.	No.	2,840	2,913	3,011	3,051	3,153	3,204
Total capacity	No.	66,086	66,705	66,835	67,006	67,177	67,647
Sites occupied by long-term guests	No.	6,466	6,493	6,358	6,405	6,491	6,575
Other sites permanently reserved (a)	No.	13,876	14,861	14,438	14,237	14,830	15,361
Employment (persons)	No.	1,914	1,866	1,786	1,812	1,997	1,917
Site nights occupied (a)	'000	2,425.9	2,725.4	2,323.6	2,204.0	2,449.8	2,782.3	9,603.4	9,759.7
Site occupancy rate (a)	per cent	39.9	45.4	38.2	35.8	39.8	45.7	39.6	39.9
Takings from accommodation	\$'000	18,168	22,069	15,241	15,301	19,096	23,299	69,009	72,937

(a) See Explanatory Notes 12 and 14.

TABLE 3 — SUMMARY OF HOLIDAY FLATS, UNITS AND HOUSES, VICTORIA

Particulars	Unit	Quarter ended				Year ended			
		December 1992	March 1993	June 1993	September 1993	December 1993	March 1994	March 1993	March 1994
Letting entities	No.	182	186	185	184	204	210
Flats, units and houses	No.	1,006	980	964	985	1,032	1,013
Single bedroom	No.	2,310	2,331	2,039	2,002	2,314	2,558
Multiple bedroom	No.	3,316	3,311	3,003	2,987	3,346	3,571
Total flats, units and houses	No.	3,316	3,311	3,003	2,987	3,346	3,571
Bed spaces	No.	14,914	15,279	13,236	13,160	15,205	16,120
Employment (persons) (a)	No.	675	658	618	625	676	702
Unit nights occupied	'000	117.3	144.3	113.2	108.7	118.8	154.1	493.0	494.8
Unit occupancy rate	per cent	38.5	48.6	41.4	39.6	38.9	49.0	42.9	42.4
Unit lettings	'000	30.0	31.4	30.0	27.4	32.0	36.6	121.1	126.0
Average length of stay	days	3.9	4.6	3.8	4.0	3.7	4.2	4.1	3.9
Takings from accommodation	\$'000	8,805	10,435	8,184	8,648	8,884	11,386	36,771	37,102

(a) Employment numbers exclude real estate agents and their employees.

TABLE 4 — SUMMARY OF VISITOR HOSTELS, VICTORIA

Particulars	Unit	Quarter ended				Year ended			
		December 1992	March 1993	June 1993	September 1993	December 1993	March 1994	March 1993	March 1994
Establishments	No.	44	42	40	43	45	49
Bed spaces	No.	2,701	2,663	2,509	2,531	2,576	2,789
Employment (persons)	No.	146	145	137	140	150	160
Guest nights	'000	91.8	109.7	68.9	67.7	92.7	117.7	342.9	347.0
Bed occupancy rate	per cent	36.9	46.0	30.2	29.1	39.1	46.9	35.3	36.6
Guest arrivals	'000	32.9	39.4	27.1	26.9	36.7	47.1	121.3	137.8
Average length of stay	days	2.8	2.8	2.5	2.5	2.5	2.5	2.8	2.5
Takings from accommodation	\$'000	1,168	1,207	894	914	1,144	1,529	4,184	4,481

TABLE 5—HOTELS, MOTELS AND GUEST HOUSES WITH FACILITIES BY STAR GRADING,
MELBOURNE CITY, MELBOURNE STATISTICAL DIVISION AND VICTORIA (a)

Particulars	Melbourne City					Melbourne Statistical Division					Total
	Star grading					Star grading					
	Ungraded and 1	2	3	4 and 5	Total	Ungraded and 1	2	3	4	5	
ESTABLISHMENTS, CAPACITY AND EMPLOYMENT											
<i>March quarter 1993—</i>											
Establishments	5	7	22	19	53	24	75	100	42	7	248
Guest rooms	669	748	2,154	4,543	8,114	870	2,079	4,660	4,795	2,413	14,817
Bed spaces	1,362	1,464	5,411	9,763	18,000	1,938	5,199	12,257	11,417	4,966	35,797
Employment (persons)	217	165	745	4,470	5,597	441	1,374	1,959	3,591	3,262	10,627
<i>March quarter 1994—</i>											
Establishments	4	9	22	20	55	19	70	100	44	8	241
Guest rooms	321	981	1,907	4,868	8,077	584	2,198	4,380	5,009	2,653	14,824
Bed spaces	790	1,914	5,092	10,619	18,415	1,517	5,256	12,070	11,951	5,524	36,318
Employment (persons)	107	243	719	4,389	5,458	470	1,270	1,812	3,543	3,262	10,357
ROOM NIGHTS OCCUPIED ('000)											
<i>March quarter 1993</i>	21.2	37.4	104.2	266.6	429.4	27.3	80.8	218.5	269.1	136.9	732.7
<i>1994—</i>											
January	4.0	14.5	33.1	91.6	143.2	6.2	28.0	69.2	85.6	52.3	241.4
February	3.7	12.7	32.8	100.0	149.2	7.0	25.3	71.6	99.5	53.0	256.1
March	5.0	16.5	40.4	113.1	175.1	8.7	29.8	83.4	114.4	62.3	298.6
<i>March quarter 1994</i>	12.7	43.6	106.3	304.8	467.5	21.9	83.1	224.2	299.3	167.5	796.1
ROOM OCCUPANCY RATES (per cent)											
<i>March quarter 1993</i>	35.2	55.6	53.7	65.2	58.8	34.9	43.2	52.2	62.4	63.0	55.0
<i>1994—</i>											
January	39.7	47.7	56.0	60.7	57.2	34.4	41.1	51.0	55.2	63.6	52.5
February	41.7	46.1	61.4	73.4	66.0	42.6	41.1	58.4	70.8	71.3	61.7
March	50.7	54.1	68.4	75.0	69.9	48.2	43.8	61.4	73.7	75.7	65.0
<i>March quarter 1994</i>	44.1	49.4	61.9	69.6	64.3	41.7	42.0	56.9	66.4	70.2	59.7
GUEST NIGHTS ('000)											
<i>March quarter 1993</i>	30.9	61.2	181.3	411.5	684.9	43.4	136.1	357.9	410.6	204.0	1,152.0
<i>1994—</i>											
January	6.4	24.7	61.6	151.3	244.1	10.6	50.0	125.9	149.3	80.2	416.0
February	5.5	19.8	52.9	146.7	224.9	10.8	40.9	115.3	146.1	76.5	389.6
March	7.1	24.7	64.8	168.0	264.7	11.9	46.7	132.9	172.6	88.0	452.1
<i>March quarter 1994</i>	19.0	69.2	179.3	466.1	733.7	33.3	137.5	374.1	468.1	244.7	1,257.7
BED OCCUPANCY RATES (per cent)											
<i>March quarter 1993</i>	25.2	46.4	37.2	46.8	42.3	24.6	29.1	32.5	40.0	45.6	35.8
<i>1994—</i>											
January	26.2	41.6	39.1	46.0	42.3	22.5	30.7	33.7	40.3	46.8	37.0
February	24.8	37.0	37.1	49.3	43.6	25.4	27.8	34.1	43.7	49.5	38.3
March	29.1	41.7	41.0	51.0	46.4	25.3	28.7	35.5	46.6	51.4	40.2
<i>March quarter 1994</i>	26.8	40.2	39.1	48.8	44.3	24.4	29.1	34.4	43.5	49.2	38.5
GUEST ARRIVALS ('000)											
<i>March quarter 1993</i>	13.9	26.2	67.7	162.4	270.2	20.5	66.1	158.4	171.6	88.0	504.5
<i>1994—</i>											
January	3.5	8.5	26.6	54.3	92.9	5.9	22.7	58.4	59.1	29.7	175.7
February	3.3	7.5	23.7	65.6	100.1	6.8	20.7	54.9	69.0	35.0	186.3
March	4.1	8.9	30.7	65.3	109.1	7.6	23.2	65.3	69.6	36.0	201.8
<i>March quarter 1994</i>	10.9	25.0	81.0	185.2	302.1	20.3	66.6	178.6	197.7	100.7	563.8
AVERAGE LENGTH OF STAY (days)											
<i>March quarter 1993</i>	2.2	2.3	2.7	2.5	2.5	2.1	2.1	2.3	2.4	2.3	2.3
<i>March quarter 1994</i>	1.7	2.8	2.2	2.5	2.4	1.6	2.1	2.1	2.4	2.4	2.2
TAKINGS FROM ACCOMMODATION (\$'000)											
<i>March quarter 1993</i>	1,463	2,308	8,383	34,909	47,062	1,376	4,553	16,851	30,045	20,535	73,860
<i>1994—</i>											
January	229	798	2,589	11,276	14,892	373	1,557	5,189	9,003	7,195	23,316
February	230	689	2,658	12,188	15,765	452	1,379	5,494	10,661	7,532	25,518
March	303	897	3,191	16,023	20,413	507	1,608	6,360	13,519	9,970	31,963
<i>March quarter 1994</i>	762	2,384	8,437	39,487	51,069	1,331	4,544	17,044	33,183	24,696	80,798

TABLE 5—HOTELS, MOTELS AND GUEST HOUSES WITH FACILITIES BY STAR GRADING.
MELBOURNE CITY, MELBOURNE STATISTICAL DIVISION AND VICTORIA (a)—continued

Particulars	Victoria						Total
	Star grading						
	1	2	3	4	5	Ungraded	
ESTABLISHMENTS, CAPACITY AND EMPLOYMENT							
<i>March quarter 1993—</i>							
Establishments	34	398	438	57	7	106	1,040
Guest rooms	337	7,535	11,910	5,560	2,413	2,189	29,944
Bed spaces	866	21,762	34,892	13,835	4,966	5,962	82,283
Employment (persons)	366	3,614	4,495	4,054	3,262	1,082	16,873
<i>March quarter 1994—</i>							
Establishments	23	385	453	66	8	82	1,017
Guest rooms	275	7,456	12,135	5,893	2,653	1,576	29,988
Bed spaces	720	21,208	35,966	14,769	5,524	4,494	82,681
Employment (persons)	278	3,382	4,498	4,114	3,262	959	16,493
ROOM NIGHTS OCCUPIED ('000)							
<i>March quarter 1993</i>	7.7	267.8	526.5	310.8	136.9	52.4	1,302.0
<i>1994—</i>							
January	1.6	91.4	185.0	102.1	52.3	14.0	446.4
February	1.4	72.2	166.5	114.8	53.0	13.6	421.5
March	2.0	89.0	202.1	131.8	62.3	17.6	504.8
<i>March quarter 1994</i>	4.9	252.6	553.7	348.7	167.5	45.3	1,372.7
ROOM OCCUPANCY RATES (per cent)							
<i>March quarter 1993</i>	25.4	39.5	49.2	62.1	63.0	26.6	48.3
<i>1994—</i>							
January	18.2	39.6	49.2	55.9	65.6	28.7	48.0
February	17.6	34.6	49.0	69.6	71.3	31.0	50.2
March	23.0	38.5	53.7	72.2	75.7	36.1	54.3
<i>March quarter 1994</i>	19.7	37.7	50.7	65.7	70.2	31.9	50.9
GUEST NIGHTS ('000)							
<i>March quarter 1993</i>	12.9	499.9	939.7	485.7	204.0	95.3	2,237.6
<i>1994—</i>							
January	2.5	185.2	370.2	180.8	80.2	26.3	845.3
February	1.9	127.0	278.9	169.3	76.5	23.8	677.4
March	2.8	157.6	342.0	201.6	88.0	28.6	820.5
<i>March quarter 1994</i>	7.1	469.8	991.1	551.7	244.7	78.7	2,343.2
BED OCCUPANCY RATES (per cent)							
<i>March quarter 1993</i>	16.6	25.5	29.9	39.0	45.6	17.8	30.2
<i>1994—</i>							
January	11.1	28.2	33.2	39.5	46.8	18.9	33.0
February	9.3	21.4	27.7	40.9	49.5	19.0	29.3
March	12.4	24.0	30.7	44.0	51.4	20.5	32.0
<i>March quarter 1994</i>	11.0	24.6	30.6	41.5	49.2	19.5	31.5
GUEST ARRIVALS ('000)							
<i>March quarter 1993</i>	8.3	299.8	539.7	212.6	88.0	40.6	1,188.9
<i>1994—</i>							
January	1.6	106.8	210.0	76.6	29.7	12.2	437.1
February	1.3	77.6	163.6	84.4	35.0	12.6	374.4
March	1.8	96.3	206.2	87.9	36.0	14.9	443.3
<i>March quarter 1994</i>	4.7	280.7	579.9	249.0	100.7	39.7	1,254.7
AVERAGE LENGTH OF STAY (days)							
<i>March quarter 1993</i>	1.6	1.7	1.7	2.3	2.3	2.3	1.9
<i>March quarter 1994</i>	1.5	1.7	1.7	2.2	2.4	2.0	1.9
TAKINGS FROM ACCOMMODATION (\$'000)							
<i>March quarter 1993</i>	329	13,793	35,678	33,774	20,535	3,525	107,633
<i>1994—</i>							
January	56	4,867	12,755	10,474	7,195	882	36,228
February	40	3,576	11,053	12,014	7,532	888	35,103
March	61	3,402	13,447	15,073	9,970	1,169	44,123
<i>March quarter 1994</i>	157	12,845	37,255	37,560	24,696	2,940	115,454

(a) From December quarter 1993, establishments with fewer than 5 rooms have been formally excluded from the scope of this collection. See Explanatory Note 2 (page 26).

TABLE 6 — HOTELS, MOTELS AND GUEST HOUSES WITH FACILITIES BY STATISTICAL DIVISION, VICTORIA (a)

Particulars	Melbourne (SD)			Barwon (SD)			Western Districts (SD)			Central Highlands (SD)		
	Licensed hotels	Motels etc.	Total	Licensed hotels	Motels etc.	Total	Licensed hotels	Motels etc.	Total	Licensed hotels	Motels etc.	Total
ESTABLISHMENTS, CAPACITY AND EMPLOYMENT												
<i>March quarter 1993—</i>												
Establishments	67	181	248	18	62	80	15	62	77	12	47	59
Guest rooms	7,154	7,663	14,817	326	1,239	1,565	232	1,098	1,330	185	951	1,136
Bed spaces	15,550	20,247	35,797	1,061	3,710	4,771	618	3,194	3,812	511	2,992	3,503
Employment (persons)	7,431	3,196	10,627	493	429	922	246	386	632	121	372	493
<i>March quarter 1994—</i>												
Establishments	70	171	241	16	62	78	13	63	76	11	46	57
Guest rooms	7,813	7,011	14,824	378	1,263	1,641	219	1,095	1,314	183	959	1,142
Bed spaces	17,915	18,403	36,318	1,138	3,774	4,912	591	3,191	3,782	514	3,005	3,519
Employment (persons)	7,828	2,529	10,357	528	444	972	235	427	662	141	365	506
ROOM NIGHTS OCCUPIED ('000)												
<i>March quarter 1993</i>	374.4	358.3	732.7	15.3	59.2	74.5	8.2	52.5	60.7	8.4	41.0	49.4
<i>1994—</i>												
January	136.5	104.9	241.4	6.5	24.2	30.7	2.6	19.5	22.2	2.9	14.0	16.8
February	149.6	106.6	256.1	5.2	17.9	23.1	2.2	15.0	17.1	2.5	13.8	16.3
March	174.7	123.9	298.6	6.1	19.1	25.2	2.5	17.6	20.1	3.0	17.5	20.4
<i>March quarter 1994</i>	460.8	335.4	796.1	17.8	61.2	79.0	7.4	52.1	59.4	8.4	45.2	53.6
ROOM OCCUPANCY RATES (per cent)												
<i>March quarter 1993</i>	58.2	52.0	55.0	52.3	53.1	52.9	39.2	53.1	50.7	50.5	47.9	48.3
<i>1994—</i>												
January	56.4	48.3	52.5	55.7	61.8	60.4	38.9	57.5	54.4	50.8	46.9	47.6
February	68.4	54.3	61.7	48.7	50.8	50.3	35.7	48.8	46.6	49.5	51.4	51.1
March	72.1	57.0	65.0	51.8	48.7	49.5	37.5	51.8	49.4	52.3	58.8	57.7
<i>March quarter 1994</i>	65.5	53.2	59.7	52.2	53.9	53.5	37.4	52.8	50.3	50.9	52.4	52.2
GUEST NIGHTS ('000)												
<i>March quarter 1993</i>	581.0	571.0	1,152.0	30.7	112.4	143.1	12.8	100.7	113.5	15.1	84.7	99.7
<i>1994—</i>												
January	226.4	189.6	416.0	12.6	51.5	64.1	4.8	42.3	47.1	6.3	30.7	37.1
February	220.2	169.3	389.6	6.9	32.6	39.5	3.6	26.8	30.3	4.7	25.6	30.4
March	258.7	193.4	452.1	9.8	35.0	44.8	4.2	31.0	35.1	5.2	32.0	37.2
<i>March quarter 1994</i>	705.3	552.4	1,257.7	29.3	119.2	148.5	12.5	100.1	112.6	16.2	88.4	104.7
BED OCCUPANCY RATES (per cent)												
<i>March quarter 1993</i>	41.5	31.4	35.8	32.2	33.6	33.3	23.0	35.0	33.1	32.8	31.4	31.6
<i>1994—</i>												
January	40.8	33.2	37.0	35.7	44.1	42.1	26.1	42.8	40.2	39.7	33.0	34.0
February	43.9	32.9	38.3	21.5	30.9	28.7	21.6	30.0	28.7	33.0	30.6	31.0
March	46.6	33.9	40.2	27.8	29.9	29.4	22.7	31.3	30.0	32.4	34.4	34.1
<i>March quarter 1994</i>	43.7	33.4	38.5	28.6	35.1	33.6	23.5	34.8	33.1	35.1	32.8	33.1
GUEST ARRIVALS ('000)												
<i>March quarter 1993</i>	243.4	261.1	504.5	11.3	67.6	78.9	7.3	67.0	74.3	9.9	58.0	67.9
<i>1994—</i>												
January	89.6	86.1	175.7	4.3	28.3	32.5	3.0	26.8	29.8	4.3	20.4	24.7
February	102.8	83.5	186.3	3.9	20.0	23.9	2.4	18.7	21.1	2.7	16.7	19.5
March	107.6	94.2	201.8	4.1	22.3	26.4	2.8	20.7	23.5	3.4	21.8	25.3
<i>March quarter 1994</i>	300.0	263.8	563.8	12.3	70.6	82.8	8.2	66.2	74.3	10.4	59.0	69.4
AVERAGE LENGTH OF STAY (days)												
<i>March quarter 1993</i>	2.4	2.2	2.3	2.7	1.7	1.8	1.7	1.5	1.5	1.5	1.5	1.5
<i>March quarter 1994</i>	2.4	2.1	2.2	2.4	1.7	1.8	1.5	1.5	1.5	1.6	1.5	1.5
TAKINGS FROM ACCOMMODATION (\$'000)												
<i>March quarter 1993</i>	45,569	28,290	73,860	1,315	4,078	5,393	390	3,118	3,507	604	2,609	3,213
<i>1994—</i>												
January	15,422	7,894	23,316	547	1,812	2,359	137	1,290	1,427	229	911	1,140
February	17,386	8,132	25,518	511	1,192	1,704	109	885	994	177	853	1,030
March	22,395	9,569	31,963	540	1,349	1,889	125	1,017	1,142	216	1,086	1,301
<i>March quarter 1994</i>	55,203	25,594	80,798	1,599	4,353	5,952	371	3,192	3,563	622	2,849	3,471

TABLE 6—HOTELS, MOTELS AND GUEST HOUSES WITH FACILITIES BY STATISTICAL DIVISION,
VICTORIA (a)—continued

Particulars	Wimmera (SD)	Mailee (SD)	Loddon-Campaspe (SD)		Goulburn (SD)			
	Total	Total	Licensed hotels	Motels etc.	Total	Licensed hotels	Motels etc.	Total
ESTABLISHMENTS, CAPACITY AND EMPLOYMENT								
<i>March quarter 1993—</i>								
Establishments	51	69	11	74	85	31	90	121
Guest rooms	857	1,609	130	1,364	1,494	625	1,690	2,315
Bed spaces	2,572	4,896	356	4,205	4,561	1,990	5,428	7,418
Employment (persons)	256	581	110	426	536	392	504	896
<i>March quarter 1994—</i>								
Establishments	50	66	11	72	83	25	93	118
Guest rooms	861	1,545	128	1,369	1,497	548	1,738	2,286
Bed spaces	2,607	4,727	352	4,241	4,593	1,743	5,420	7,163
Employment (persons)	244	521	128	471	599	343	504	847
ROOM NIGHTS OCCUPIED ('000)								
<i>March quarter 1993</i>	31.2	59.5	3.8	61.6	65.3	15.8	53.1	68.8
<i>1994—</i>								
January	10.1	20.5	1.3	20.2	21.6	4.0	17.9	21.9
February	8.6	15.7	1.0	17.2	18.2	4.3	16.3	21.1
March	12.4	22.3	1.3	21.6	22.9	4.5	20.0	24.5
<i>March quarter 1994</i>	31.1	59.0	3.6	59.0	62.6	12.8	54.7	67.5
ROOM OCCUPANCY RATES (per cent)								
<i>March quarter 1993</i>	40.4	41.1	32.2	50.2	48.6	28.0	34.9	33.0
<i>1994—</i>								
January	37.9	42.8	34.0	47.7	46.5	23.5	33.4	31.0
February	35.7	36.3	27.1	44.9	43.4	27.8	34.6	33.0
March	46.3	47.6	32.8	50.8	49.2	26.6	37.2	34.6
<i>March quarter 1994</i>	40.1	42.4	31.4	47.9	46.5	25.9	35.1	32.9
GUEST NIGHTS ('000)								
<i>March quarter 1993</i>	57.0	108.2	5.9	120.4	126.3	25.1	100.3	125.4
<i>1994—</i>								
January	20.8	39.9	2.1	42.4	44.5	7.3	36.3	43.5
February	14.3	25.1	1.6	29.9	31.5	6.5	29.2	35.7
March	22.4	38.5	2.1	39.2	41.3	7.2	34.7	41.9
<i>March quarter 1994</i>	57.4	103.5	5.8	111.6	117.4	20.9	100.1	121.1
BED OCCUPANCY RATES (per cent)								
<i>March quarter 1993</i>	24.6	24.6	18.4	31.8	30.8	14.0	20.5	18.8
<i>1994—</i>								
January	25.7	27.2	18.9	32.3	31.3	13.5	21.7	19.7
February	19.5	19.0	16.3	25.2	24.5	13.3	19.2	17.8
March	27.7	26.3	19.4	29.8	29.0	13.3	20.6	18.9
<i>March quarter 1994</i>	24.5	24.3	18.3	29.2	28.4	13.4	20.6	18.8
GUEST ARRIVALS ('000)								
<i>March quarter 1993</i>	40.0	65.1	4.0	79.8	83.8	14.7	60.6	75.3
<i>1994—</i>								
January	15.2	24.3	1.5	28.4	29.9	3.9	21.1	25.0
February	11.0	16.6	1.1	20.3	21.4	3.9	18.5	22.4
March	16.0	25.5	1.5	27.0	28.5	4.5	22.1	26.6
<i>March quarter 1994</i>	42.3	66.5	4.1	75.7	79.8	12.4	61.7	74.0
AVERAGE LENGTH OF STAY (days)								
<i>March quarter 1993</i>	1.4	1.7	1.5	1.5	1.5	1.7	1.7	1.7
<i>March quarter 1994</i>	1.4	1.6	1.4	1.5	1.5	1.7	1.6	1.6
TAKINGS FROM ACCOMMODATION (\$'000)								
<i>March quarter 1993</i>	1,688	3,084	175	3,824	4,000	956	3,297	4,253
<i>1994—</i>								
January	579	1,100	58	1,320	1,378	228	1,095	1,324
February	475	760	44	1,037	1,081	242	995	1,237
March	705	1,159	66	1,349	1,415	268	1,236	1,504
<i>March quarter 1994</i>	1,758	3,019	168	3,706	3,874	738	3,326	4,064

TABLE 6—HOTELS, MOTELS AND GUEST HOUSES WITH FACILITIES BY STATISTICAL DIVISION,
VICTORIA (a)—continued

Particulars	Ovens-Murray (SD)			East Gippsland (SD)			Gippsland (SD)			Victoria		
	Licensed hotels	Motels etc.	Total	Licensed hotels	Motels etc.	Total	Licensed hotels	Motels etc.	Total	Licensed hotels	Motels etc.	Total
ESTABLISHMENTS, CAPACITY AND EMPLOYMENT												
<i>March quarter 1993—</i>												
Establishments	17	89	106	9	60	69	18	57	75	210	830	1,040
Guest rooms	335	1,796	2,131	140	1,145	1,285	257	1,148	1,405	9,619	20,325	29,944
Bed spaces	1,166	5,812	6,978	417	3,478	3,895	703	3,377	4,080	22,907	59,376	82,283
Employment (persons)	192	594	786	74	341	415	362	367	729	9,603	7,270	16,873
<i>March quarter 1994—</i>												
Establishments	15	91	106	8	62	70	17	55	72	196	821	1,017
Guest rooms	284	1,854	2,138	127	1,164	1,291	252	1,197	1,449	10,152	19,836	29,988
Bed spaces	899	5,983	6,882	408	3,537	3,945	698	3,535	4,233	24,772	57,909	82,681
Employment (persons)	137	511	648	73	358	431	322	384	706	9,908	6,585	16,493
ROOM NIGHTS OCCUPIED ('000)												
<i>March quarter 1993</i>	5.6	50.7	56.3	4.1	48.8	52.9	8.1	42.5	50.7	451.0	851.0	1,302.0
<i>1994—</i>												
January	2.2	18.8	21.0	1.8	19.7	21.5	2.6	16.1	18.6	162.7	283.7	446.4
February	1.8	12.5	14.2	1.1	14.1	15.2	2.0	13.8	15.8	171.3	250.2	421.5
March	2.4	18.5	21.0	1.3	17.9	19.2	2.6	15.2	17.8	201.3	303.5	504.8
<i>March quarter 1994</i>	6.4	49.8	56.2	4.2	51.7	55.9	7.2	45.1	52.3	535.2	837.5	1,372.7
ROOM OCCUPANCY RATES (per cent)												
<i>March quarter 1993</i>	18.4	31.4	29.4	32.4	47.4	45.8	35.1	41.2	40.1	52.1	46.6	48.3
<i>1994—</i>												
January	25.2	32.7	31.7	46.2	54.7	53.8	32.8	43.3	41.5	51.7	46.2	48.0
February	22.1	24.0	23.7	30.6	43.3	42.0	28.8	41.2	39.0	60.3	45.1	50.2
March	27.6	32.3	31.6	32.8	49.5	47.9	33.5	40.9	39.6	64.0	49.4	54.3
<i>March quarter 1994</i>	25.1	29.8	29.2	36.7	49.3	48.1	31.8	41.8	40.1	58.6	46.9	50.9
GUEST NIGHTS ('000)												
<i>March quarter 1993</i>	10.2	103.5	113.7	8.0	97.7	105.7	13.4	79.6	93.0	713.8	1,523.7	2,237.6
<i>1994—</i>												
January	4.2	40.1	44.3	4.4	45.5	49.9	4.8	33.2	38.0	276.8	568.4	845.3
February	3.0	24.4	27.4	2.1	25.2	27.2	3.2	23.1	26.3	254.4	423.0	677.4
March	4.2	36.8	40.9	2.5	32.4	35.0	4.2	27.0	31.2	302.4	518.1	820.5
<i>March quarter 1994</i>	11.4	101.3	112.7	9.0	103.1	112.1	12.2	83.3	95.5	833.7	1,509.5	2,343.2
BED OCCUPANCY RATES (per cent)												
<i>March quarter 1993</i>	9.8	19.8	18.1	21.4	31.2	30.2	21.2	26.2	25.3	34.6	28.5	30.2
<i>1994—</i>												
January	15.1	21.6	20.8	34.8	41.5	40.8	22.2	30.3	29.0	36.1	31.7	33.0
February	12.0	14.6	14.2	18.1	25.4	24.7	16.3	23.4	22.2	36.7	26.1	29.3
March	15.0	19.8	19.2	20.1	29.6	28.6	19.5	24.6	23.8	39.4	28.9	32.0
<i>March quarter 1994</i>	14.1	18.8	18.2	24.6	32.4	31.6	19.4	26.2	25.1	37.4	29.0	31.5
GUEST ARRIVALS ('000)												
<i>March quarter 1993</i>	6.7	57.1	63.8	4.9	64.2	69.1	8.8	57.4	66.2	317.5	871.4	1,188.9
<i>1994—</i>												
January	2.7	22.1	24.7	2.5	28.0	30.5	2.8	21.9	24.6	116.5	320.5	437.1
February	1.9	14.9	16.8	1.2	16.9	18.1	1.8	15.4	17.2	124.0	250.4	374.4
March	2.6	22.3	24.9	1.7	22.2	23.9	2.5	18.4	20.9	134.5	308.8	443.3
<i>March quarter 1994</i>	7.2	59.3	66.5	5.4	67.1	72.5	7.1	55.7	62.7	375.0	879.7	1,254.7
AVERAGE LENGTH OF STAY (days)												
<i>March quarter 1993</i>	1.5	1.8	1.8	1.6	1.5	1.5	1.5	1.4	1.4	2.2	1.7	1.9
<i>March quarter 1994</i>	1.6	1.7	1.7	1.7	1.5	1.5	1.7	1.5	1.5	2.2	1.7	1.9
TAKINGS FROM ACCOMMODATION (\$'000)												
<i>March quarter 1993</i>	198	2,741	2,939	201	2,804	3,005	295	2,397	2,692	50,070	57,563	107,633
<i>1994—</i>												
January	80	1,088	1,167	107	1,245	1,353	103	980	1,083	17,031	19,196	36,228
February	56	652	708	47	752	799	75	723	798	18,734	16,370	35,103
March	83	994	1,077	59	976	1,036	98	834	933	23,988	20,135	44,123
<i>March quarter 1994</i>	219	2,734	2,953	214	2,974	3,188	277	2,537	2,814	59,753	55,701	115,454

(a) From December quarter 1993, establishments with fewer than 5 rooms have been formally excluded from the scope of this collection. See Explanatory Note 2 (page 26).

TABLE 7—HOTELS, MOTELS AND GUEST HOUSES WITH FACILITIES: STATISTICAL DIVISIONS

Statistical Divisions and selected Statistical Local Areas					Room nights occupied				Room occupancy rates (per cent)			
	Establish- ments	Guest rooms	Bed spaces (persons)	Employ- ment (persons)				Mar.				
					Jan.	Feb.	Mar.	Mar. qtr	Jan.	Feb.	Mar.	Mar. qtr
Box Hill (C)	3	87	223	29	1,173	1,390	1,505	4,068	43.5	57.1	55.8	52.0
Broadmeadows (C)	7	192	509	131	3,105	3,836	4,117	11,058	52.2	71.4	69.2	64.0
Cranbourne (S)	5	97	320	29	902	886	1,235	3,023	30.0	32.6	41.1	34.6
Croydon (C)	4	91	270	180	546	704	1,085	2,335	19.4	27.6	38.5	28.5
Doncaster & Templestowe (C)	4	91	253	111	1,253	1,414	1,470	4,137	44.4	55.5	52.1	50.5
Essendon (C)	3	100	298	31	1,124	1,371	1,628	4,123	36.3	49.0	52.5	45.8
Flinders (S)	17	289	761	226	4,963	3,922	4,166	13,051	55.4	48.5	46.5	50.2
Footscray (C)	3	114	308	27	973	1,098	1,120	3,191	27.5	34.4	31.7	31.1
Frankston (C)	5	227	673	106	3,271	3,055	2,932	9,258	46.5	48.1	41.7	45.3
Hastings (S)	4	84	251	50	1,330	1,034	1,270	3,634	51.1	44.0	48.8	48.1
Healesville (S)	8	85	298	54	1,933	894	1,234	3,161	39.2	37.6	46.8	41.3
Kew (C)	3	106	256	45	1,370	1,874	2,258	5,502	41.7	63.1	68.7	57.7
Knox (C)	3	133	365	67	1,364	2,236	2,307	5,907	33.1	60.0	56.0	49.3
Lillydale (S)	6	165	390	161	1,225	1,625	1,382	4,732	23.9	35.2	37.2	32.0
Meibourne (C) — Inner	29	5,895	12,499	4,310	102,006	110,373	129,683	342,062	55.8	66.9	71.0	64.5
— Remainder	26	2,182	5,916	1,148	41,180	38,850	45,377	125,407	60.9	63.6	67.1	63.9
Mornington (S)	5	68	189	62	1,066	849	933	2,848	50.6	44.6	44.3	46.5
Nunawading (C)	5	154	383	207	2,886	3,084	3,457	9,427	60.5	71.5	72.4	68.0
Oakleigh (C)	6	172	478	42	1,768	2,374	2,231	6,373	33.2	49.3	41.8	41.2
Prahran (C)	6	267	653	226	5,332	5,253	6,148	16,733	64.4	70.3	74.3	69.6
Ringwood (C)	4	86	225	124	984	1,394	1,564	3,942	36.9	57.9	58.7	50.9
St Kilda (C)	14	689	1,610	198	10,458	10,824	11,941	33,223	49.0	56.1	55.9	53.6
South Melbourne (C)	9	1,535	3,859	1,340	26,742	29,887	38,021	94,650	56.2	69.5	79.9	68.5
Springvale (C)	6	154	467	216	2,066	2,080	2,357	6,503	43.3	48.2	49.4	46.9
Upper Yarra (S) Pt. A	4	97	240	24	333	733	647	1,713	11.1	27.0	21.5	19.6
Waverley (C)	6	158	405	296	2,105	2,635	2,877	7,617	43.0	59.6	58.7	53.6
Werrisbee (C)	5	128	379	50	1,230	1,240	1,499	3,969	31.0	34.6	37.8	34.5
Balance	41	1,378	3,840	867	19,598	21,229	23,650	64,477	45.9	55.0	55.4	52.0
<i>Meibourne (SD)</i>	<i>241</i>	<i>14,824</i>	<i>36,318</i>	<i>10,357</i>	<i>241,386</i>	<i>256,144</i>	<i>298,594</i>	<i>796,124</i>	<i>52.5</i>	<i>61.7</i>	<i>65.0</i>	<i>59.7</i>
Barrabool (S) Pt. B	8	140	413	57	2,688	1,399	1,483	5,570	61.9	35.7	34.2	44.2
Bellarine (RC) Pt. A and B	7	95	327	83	1,571	787	798	3,156	53.3	29.6	27.1	36.9
Colac (C)	5	109	321	69	1,295	1,437	1,511	4,343	38.3	47.1	47.7	44.3
Geelong (C)	10	357	975	173	4,924	5,159	6,209	16,292	44.5	51.6	56.1	50.7
Otway (S)	13	198	566	101	5,032	3,032	3,388	11,452	82.0	54.7	55.2	64.3
Queenscliffe (B)	5	106	301	81	2,182	1,510	1,638	5,330	66.4	50.9	49.8	55.9
Sth Barwon (C) Pt. A and B	11	158	512	124	2,709	1,794	2,234	6,737	55.3	40.6	45.6	47.4
Winchelsea (S)	10	296	969	215	7,615	5,865	5,398	18,878	83.0	70.8	58.8	70.9
Balance	9	182	528	69	2,705	2,118	2,397	7,220	47.9	41.6	42.5	44.1
<i>Barwon (SD)</i>	<i>78</i>	<i>1,641</i>	<i>4,912</i>	<i>972</i>	<i>30,721</i>	<i>23,101</i>	<i>25,156</i>	<i>78,978</i>	<i>60.4</i>	<i>50.3</i>	<i>49.5</i>	<i>53.5</i>
Camperdown (T)	3	48	137	18	877	895	1,130	2,902	58.9	66.6	75.9	67.2
Hamilton (C)	10	200	565	103	1,879	2,146	2,645	6,670	30.3	38.3	42.7	37.1
Hampden (S)	4	36	87	13	164	124	183	471	14.7	12.3	16.4	14.5
Heytesbury (S)	6	75	225	55	1,635	1,230	1,407	4,272	70.3	58.6	60.5	63.3
Heywood (S)	5	57	180	14	669	392	632	1,693	37.9	24.6	35.8	33.0
Port Fairy (B)	7	84	250	35	1,852	1,128	1,433	4,413	71.1	48.0	55.0	58.4
Portland (C)	11	259	742	152	3,889	2,830	3,326	10,045	48.4	39.0	41.4	43.1
Warrnambool (C)	23	499	1,435	241	10,442	7,936	8,686	27,064	67.5	56.8	56.2	60.3
Balance	7	56	161	31	766	465	681	1,912	44.1	29.7	39.2	37.9
<i>Western District (SD)</i>	<i>76</i>	<i>1,314</i>	<i>3,782</i>	<i>662</i>	<i>22,173</i>	<i>17,146</i>	<i>20,123</i>	<i>59,442</i>	<i>54.4</i>	<i>46.6</i>	<i>49.4</i>	<i>50.3</i>
Ararat (C)	6	101	308	25	1,338	1,484	1,763	4,585	42.7	52.5	56.3	50.4
Ballaarat (C)	18	540	1,725	240	8,591	8,567	11,308	28,466	51.3	56.7	67.6	58.6
Ballaarat (S) Pt. A and B	5	148	491	89	2,367	2,262	2,761	7,390	51.6	54.6	60.2	55.5
Buninyong (S) Pt. A	6	90	269	22	1,158	1,014	1,260	3,432	41.5	40.2	45.2	42.4
Dayleford & Glenlyon (S)	9	134	347	81	1,994	1,709	1,782	5,485	48.0	45.5	42.9	45.5
Talbot & Clunes (S)	3	20	63	13	123	60	145	328	19.8	13.4	23.4	19.4
Balance	10	109	316	36	1,266	1,196	1,423	3,885	37.5	39.2	42.1	39.6
<i>Central Highlands (SD)</i>	<i>57</i>	<i>1,142</i>	<i>3,519</i>	<i>506</i>	<i>16,337</i>	<i>16,292</i>	<i>20,442</i>	<i>53,571</i>	<i>47.6</i>	<i>51.1</i>	<i>57.7</i>	<i>52.2</i>
Horsham (C)	15	319	980	74	3,753	3,751	4,824	12,328	38.0	42.0	48.8	42.9
Lowan (S)	4	68	180	14	655	523	798	1,976	31.1	27.5	37.9	32.3
Stawell (C)	8	139	447	42	1,334	1,070	1,837	4,241	31.0	27.5	42.6	33.9
Stawell (S)	9	173	525	78	2,925	1,740	2,633	7,298	54.5	35.9	49.1	46.9
St Arnaud (T)	4	41	118	10	360	352	523	1,235	28.3	30.7	41.1	33.5
Warracknabeai (S)	3	35	98	7	336	299	443	1,078	31.0	30.5	40.8	34.2
Balance	7	86	259	19	755	868	1,209	2,932	28.3	36.0	49.1	37.9
<i>Wimmera (SD)</i>	<i>50</i>	<i>861</i>	<i>2,607</i>	<i>244</i>	<i>10,118</i>	<i>8,603</i>	<i>12,367</i>	<i>31,088</i>	<i>37.9</i>	<i>35.7</i>	<i>46.3</i>	<i>40.1</i>

AND SELECTED STATISTICAL LOCAL AREAS, VICTORIA, MARCH QUARTER 1994

<i>Guest nights</i>				<i>Guest arrivals</i>				<i>Takings from accommodation (\$'000)</i>			
<i>Jan.</i>	<i>Feb.</i>	<i>Mar.</i>	<i>Mar. qtr</i>	<i>Jan.</i>	<i>Feb.</i>	<i>Mar.</i>	<i>Mar. qtr</i>	<i>Jan.</i>	<i>Feb.</i>	<i>Mar.</i>	<i>Mar. qtr</i>
2,196	2,222	2,435	6,853	1,518	1,633	1,780	4,931	83	99	98	281
4,388	5,674	6,493	17,055	3,241	4,377	4,387	12,005	162	247	314	724
1,259	1,199	1,738	4,196	842	841	1,106	2,789	51	50	65	165
875	1,110	1,664	3,649	562	778	900	2,240	31	42	62	135
1,943	1,956	2,290	6,189	881	859	1,034	2,774	86	104	109	300
1,980	2,400	2,575	6,955	698	797	712	2,207	83	102	116	302
11,020	6,757	7,525	25,302	6,311	4,330	5,026	15,667	458	348	296	1,102
1,148	1,315	1,335	3,798	900	1,003	1,053	2,956	67	85	84	236
5,962	5,219	4,580	15,761	3,350	2,986	2,372	8,708	231	217	207	655
2,709	1,816	2,231	6,756	1,094	866	960	2,920	92	61	82	235
2,913	2,653	2,122	7,688	1,609	1,644	1,739	4,992	63	56	58	177
2,648	2,959	3,636	9,243	1,203	1,082	1,563	3,848	144	214	247	604
2,137	3,180	3,358	8,675	641	952	1,183	2,776	113	184	194	491
2,110	2,422	3,441	7,973	1,213	1,229	1,592	4,034	79	124	145	349
168,433	162,583	191,778	522,794	63,225	74,050	77,311	214,586	11,011	12,182	15,971	39,164
75,635	62,365	72,895	210,895	29,676	26,094	31,770	87,540	3,880	3,583	4,442	11,905
2,083	1,370	1,475	4,928	1,292	920	915	3,127	69	59	66	194
5,145	5,522	5,839	16,506	3,154	3,906	3,318	10,378	209	226	257	692
3,552	3,853	3,427	10,632	1,363	1,587	1,749	4,699	137	171	156	464
9,124	7,640	8,707	25,471	2,908	3,310	3,611	9,829	578	622	729	1,928
1,344	2,777	2,869	7,490	996	1,683	1,684	4,363	66	96	118	279
18,966	17,522	19,216	55,704	9,388	8,306	8,840	26,534	710	738	866	2,315
44,237	42,296	53,537	140,070	15,959	18,270	19,646	53,875	2,883	3,578	4,688	11,148
3,038	2,795	3,066	8,899	1,194	1,379	1,583	4,156	176	191	214	581
591	1,101	986	2,678	398	731	593	1,722	15	32	27	75
2,721	3,221	3,513	9,455	1,476	1,828	2,012	5,316	191	249	269	709
2,463	2,115	2,814	7,392	1,441	1,345	1,701	4,487	78	74	94	246
34,603	33,519	36,542	104,664	19,202	19,524	21,633	60,359	1,569	1,784	1,989	5,342
416,023	389,561	452,087	1,257,671	175,735	186,310	201,773	563,818	23,316	25,518	31,963	80,798
5,860	2,775	3,042	11,677	3,623	2,232	2,257	8,112	212	96	106	414
4,681	1,819	1,924	8,424	1,729	1,120	1,102	3,951	115	50	54	219
2,628	2,058	2,441	7,127	2,343	1,575	1,815	5,733	69	58	74	201
7,435	6,829	8,550	22,914	4,974	4,515	5,296	14,785	337	377	475	1,189
12,394	6,724	7,780	26,898	5,985	4,118	4,601	14,704	425	218	236	879
4,605	2,655	2,804	10,064	2,390	1,252	1,449	5,091	158	90	103	351
6,420	4,447	4,490	15,357	3,720	2,381	2,905	9,006	184	107	146	436
16,012	9,200	10,259	35,471	5,134	4,666	4,612	14,412	693	580	543	1,816
4,092	3,005	3,448	10,545	2,610	2,072	2,348	7,030	166	128	152	447
64,127	39,512	44,838	148,477	32,508	23,931	26,385	82,824	2,359	1,704	1,889	5,952
1,582	1,446	1,834	4,862	1,146	972	1,204	3,322	40	39	52	130
3,472	3,256	4,075	10,803	2,726	2,650	3,197	8,573	110	121	150	381
334	237	348	919	222	172	207	601	8	5	8	21
3,981	2,382	2,370	9,233	2,481	1,680	1,834	5,995	137	84	98	320
1,507	674	1,190	3,371	1,026	578	829	2,433	30	16	27	74
4,004	2,439	3,059	9,502	2,292	1,574	1,917	5,783	127	73	92	292
7,321	4,365	5,216	16,902	4,480	2,625	3,177	10,282	204	146	161	511
23,172	14,626	15,207	53,005	14,252	10,048	10,271	34,571	729	487	519	1,735
1,711	921	1,346	3,978	1,144	754	889	2,787	43	22	33	99
47,084	30,346	35,145	112,575	29,769	21,053	23,525	74,347	1,427	994	1,142	3,563
1,991	2,162	2,564	6,717	1,610	1,645	2,041	5,296	65	68	85	218
20,582	17,201	21,313	59,096	13,842	10,449	14,200	38,491	600	570	730	1,900
5,889	4,148	5,135	15,172	3,378	2,793	3,487	9,658	196	164	201	561
2,525	1,839	2,297	6,661	2,058	1,372	1,720	5,150	59	49	62	169
3,091	2,595	2,748	8,434	1,632	1,428	1,505	4,565	123	105	114	341
255	99	282	636	150	73	170	393	10	6	13	28
2,746	2,349	2,863	7,958	2,029	1,693	2,127	5,849	37	69	97	254
37,079	30,393	37,202	104,674	24,699	19,453	25,250	69,402	1,140	1,030	1,301	3,471
6,987	5,829	8,048	20,864	5,743	4,865	5,964	16,572	201	212	290	703
1,343	1,015	1,675	4,033	1,158	905	1,439	3,502	34	26	40	100
2,769	1,685	3,083	7,537	1,965	1,181	2,330	5,476	70	55	91	216
7,178	3,574	6,071	16,823	4,357	2,457	3,589	10,403	208	117	182	507
679	509	832	2,020	426	337	595	1,358	18	15	22	54
634	464	723	1,821	561	401	652	1,614	15	12	19	47
1,192	1,188	1,930	4,310	976	895	1,465	3,336	33	37	60	130
20,782	14,264	22,362	57,408	15,186	11,041	16,034	42,261	579	475	705	1,758

TABLE 7 — HOTELS, MOTELS AND GUEST HOUSES WITH FACILITIES: STATISTICAL DIVISIONS

Statistical Divisions and selected Statistical Local Areas	Establish- ments	Guest rooms	Bed spaces	Employ- ment (persons)	Room nights occupied				Room occupancy rates (per cent)			
					Jan.	Feb.	Mar.	Mar. qtr	Jan.	Feb.	Mar.	Mar. qtr
					Kerang (B)	3	52	154	7	327	361	718
Mildura (C)	30	891	2,725	301	12,244	8,761	13,675	34,680	44.3	35.1	49.5	43.2
Mildura (S) Pt. A and B	5	74	217	28	820	688	938	2,446	35.7	33.2	40.9	36.7
Swan Hill (C)	15	358	1,096	128	5,569	4,781	5,706	16,056	50.2	47.7	51.4	49.8
Swan Hill (S)	6	89	293	29	858	517	894	2,269	31.1	20.7	32.4	28.3
Balance	7	81	242	28	676	579	861	2,116	26.9	25.5	34.3	29.0
<i>Maillee (SD)</i>	<i>66</i>	<i>1,545</i>	<i>4,727</i>	<i>521</i>	<i>20,494</i>	<i>15,687</i>	<i>22,792</i>	<i>58,973</i>	<i>42.8</i>	<i>36.3</i>	<i>47.6</i>	<i>42.4</i>
Bendigo (C)	25	535	1,662	206	8,401	6,707	9,205	24,313	50.7	44.8	55.5	50.5
Castlemaine (C)	3	48	145	13	618	590	722	1,930	41.5	43.9	48.5	44.7
Echuca (C)	19	412	1,274	146	7,229	5,747	6,707	19,683	56.6	49.8	52.5	53.1
Kyneton (S)	3	26	73	6	351	315	412	1,078	43.5	43.3	51.1	46.1
Marong (RC) Pt. A and B	4	54	172	21	680	503	775	1,958	40.6	33.3	46.3	40.3
Maryborough (C)	7	80	223	29	838	790	978	2,606	33.8	35.3	39.4	36.2
Balance	22	342	1,044	178	3,456	3,520	4,055	11,031	32.6	36.8	38.2	35.8
<i>Loddon-Campaspe (SD)</i>	<i>83</i>	<i>1,497</i>	<i>4,593</i>	<i>599</i>	<i>21,573</i>	<i>18,172</i>	<i>22,854</i>	<i>62,599</i>	<i>46.5</i>	<i>43.4</i>	<i>49.2</i>	<i>46.5</i>
Alexandra (S)	22	506	1,370	241	3,991	3,669	5,411	13,071	25.4	25.9	34.5	28.7
Benalla (C)	9	152	456	24	1,329	1,681	2,163	5,673	38.8	39.5	45.9	41.5
Cobram (S)	5	80	236	21	1,059	893	943	2,895	42.7	39.9	38.0	40.2
Euroa (S)	3	41	114	12	402	491	485	1,378	31.6	42.8	38.2	37.3
Goulburn (S)	5	55	195	12	782	524	520	1,826	45.9	34.0	30.5	36.9
Kilmore (S)	3	42	119	7	354	316	370	1,040	27.2	26.9	28.4	27.5
Kyabram (T)	3	38	101	15	383	374	560	1,317	32.5	35.2	47.5	38.5
Mansfield (S) (a)	25	563	2,159	168	3,603	2,405	2,794	8,802	20.6	15.3	16.0	17.4
Numurkah (S)	3	39	119	6	400	334	403	1,137	33.1	30.6	33.3	32.4
Rodney (S) Pt. A and B	4	47	148	32	706	679	691	2,076	61.6	51.6	47.4	53.0
Seymour (S)	6	107	339	57	1,665	1,752	1,886	5,303	50.2	58.5	56.9	55.1
Shepparton (C)	17	476	1,400	181	5,282	6,568	6,942	18,792	35.8	49.3	47.0	43.9
Balance	13	140	407	71	1,404	1,425	1,372	4,201	32.4	36.4	31.6	33.3
<i>Goulburn (SD)</i>	<i>118</i>	<i>2,286</i>	<i>7,163</i>	<i>847</i>	<i>21,860</i>	<i>21,111</i>	<i>24,540</i>	<i>67,511</i>	<i>31.0</i>	<i>33.0</i>	<i>34.6</i>	<i>32.9</i>
Beechworth (S)	6	86	250	32	1,485	741	1,397	3,623	55.7	30.8	52.4	46.8
Bright (S) (a)	50	1,109	3,755	338	7,718	4,056	6,386	18,660	22.4	13.1	20.0	18.7
Myrtleford (S)	4	69	206	15	595	521	769	1,885	27.8	27.0	36.0	30.4
Russherglen (S)	6	67	196	14	957	474	1,014	2,445	46.1	25.3	48.8	40.5
Upper Murray (S)	4	52	152	27	430	389	411	1,230	26.7	26.7	25.5	26.3
Wangaratta (C)	14	316	927	125	3,869	3,479	4,114	11,462	39.5	39.3	42.0	40.3
Wodonga (RC)	11	223	731	50	3,323	2,638	3,665	9,626	48.1	42.2	53.0	48.0
Yarrawonga (S)	7	148	439	36	2,040	1,237	1,370	5,147	44.5	29.9	40.8	38.6
Balance	4	68	226	11	594	680	849	2,123	28.2	35.7	40.3	34.7
<i>Ovens-Murray (SD)</i>	<i>106</i>	<i>2,138</i>	<i>6,882</i>	<i>648</i>	<i>21,011</i>	<i>14,215</i>	<i>20,975</i>	<i>56,201</i>	<i>31.7</i>	<i>33.7</i>	<i>31.6</i>	<i>29.2</i>
Bairnsdale (C)	11	222	613	87	3,265	2,489	3,365	9,119	47.4	40.0	48.9	45.6
Maffra (S)	3	33	94	16	336	371	391	1,098	32.8	40.2	38.2	37.0
Orbost (S)	13	179	566	56	3,671	2,151	2,912	8,734	66.2	42.9	52.5	54.2
Sale (C)	7	234	700	91	2,865	3,371	4,001	10,237	39.5	51.4	55.2	48.6
Tambo (S) Pt. A and B	29	537	1,663	162	10,434	6,183	7,602	24,219	62.7	41.1	45.7	50.1
Balance	7	86	309	19	968	625	884	2,477	36.3	26.0	33.2	32.0
<i>East Gippsland (SD)</i>	<i>70</i>	<i>1,291</i>	<i>3,945</i>	<i>431</i>	<i>21,539</i>	<i>15,190</i>	<i>19,155</i>	<i>55,884</i>	<i>53.8</i>	<i>42.0</i>	<i>47.9</i>	<i>48.1</i>
Alberton (S)	5	76	219	20	717	527	822	2,066	30.4	24.8	34.9	30.2
Bass (S)	4	37	109	40	746	417	457	1,620	65.0	40.3	39.8	48.6
Moe (C)	3	73	222	20	812	851	1,098	2,761	35.9	41.6	48.5	42.0
Morwell (C) Pt. A	11	247	744	152	2,136	2,839	3,165	8,140	27.9	41.0	41.3	36.6
Phillip Island (S)	12	285	968	210	6,559	4,174	3,864	14,597	74.2	52.3	43.7	56.9
Rosedale (S)	5	119	293	19	647	557	701	1,905	17.5	16.7	19.0	17.8
South Gippsland (S)	6	92	271	54	1,374	1,055	1,243	3,672	48.2	41.0	43.6	44.3
Traralgon (C)	10	224	590	77	2,697	2,749	3,044	8,490	38.8	43.8	43.8	42.1
Warragul (RC)	4	55	145	45	459	656	793	1,908	26.9	42.6	46.5	38.5
Woorayl (S)	3	51	134	10	781	789	830	2,400	49.4	55.3	52.5	52.3
Balance	9	190	538	59	1,712	1,229	1,792	4,733	29.1	23.1	30.4	27.7
<i>Gippsland (SD)</i>	<i>72</i>	<i>1,449</i>	<i>4,233</i>	<i>706</i>	<i>18,640</i>	<i>15,843</i>	<i>17,809</i>	<i>52,292</i>	<i>41.5</i>	<i>39.0</i>	<i>39.6</i>	<i>40.1</i>
<i>Total Victoria</i>	<i>1,017</i>	<i>29,988</i>	<i>82,681</i>	<i>16,493</i>	<i>446,352</i>	<i>421,504</i>	<i>504,807</i>	<i>1,372,663</i>	<i>48.0</i>	<i>50.2</i>	<i>54.3</i>	<i>50.9</i>

(a) Snow field resorts are included continuously as capacity (potentially) available irrespective of any off season closures. The average occupancy rates of establishments in Bright (S) and Mansfield (S) actually remaining open during the snow fields off season, therefore, are significantly higher than the overall rates published.

AND SELECTED STATISTICAL LOCAL AREAS, VICTORIA, MARCH QUARTER 1994—continued

Guest nights				Guest arrivals				Takings from accommodation (\$'000)			
Jan.	Feb.	Mar.	Mar. qtr	Jan.	Feb.	Mar.	Mar. qtr	Jan.	Feb.	Mar.	Mar. qtr
558	575	1,250	2,383	480	435	964	1,879	18	19	38	75
25,426	14,627	24,075	64,128	14,478	9,592	15,685	39,755	682	455	730	1,867
1,523	1,069	1,582	4,174	777	504	806	2,087	33	24	32	90
9,559	7,094	8,722	25,375	6,489	4,767	5,988	17,244	300	216	286	802
1,553	817	1,514	3,884	997	546	944	2,487	34	18	34	86
1,282	931	1,384	3,597	1,114	780	1,120	3,014	33	27	38	98
39,901	25,113	38,527	103,541	24,335	16,624	25,507	66,466	1,100	760	1,159	3,019
16,315	10,927	16,076	43,318	11,259	7,800	10,819	29,878	528	402	578	1,508
1,262	1,040	1,341	3,643	913	800	1,012	2,725	41	37	45	122
16,399	11,131	13,387	40,917	10,982	7,142	9,259	27,383	510	369	440	1,320
615	524	717	1,856	475	412	514	1,401	15	14	18	48
1,486	844	1,380	3,710	810	433	801	2,044	38	27	43	108
1,217	1,131	1,355	3,703	915	919	1,159	2,993	42	38	50	130
7,201	5,933	7,089	20,223	4,559	3,885	4,939	13,383	204	194	240	638
44,495	31,530	41,345	117,370	29,913	21,391	28,503	79,807	1,378	1,081	1,415	3,874
7,593	5,713	9,009	22,315	3,406	3,027	4,608	11,041	283	262	436	981
3,737	2,972	3,578	10,287	2,582	2,221	2,666	7,469	94	89	102	286
1,550	1,403	1,432	4,385	956	837	876	2,669	49	44	47	140
799	860	969	2,628	537	560	551	1,648	22	25	26	73
2,149	1,070	1,038	4,257	782	641	747	2,170	35	22	22	79
517	567	573	1,657	318	336	410	1,064	15	15	16	45
540	583	880	2,003	404	439	524	1,367	16	16	24	56
9,920	5,734	6,548	22,302	5,535	3,406	4,471	13,412	267	162	190	619
748	572	663	1,983	531	407	352	1,290	18	13	16	47
1,211	1,056	1,102	3,369	550	736	740	2,026	38	33	32	103
3,406	3,230	3,422	10,058	2,112	1,994	2,704	6,810	107	122	130	359
9,224	9,759	10,474	29,457	5,698	6,293	6,523	18,514	300	355	378	1,034
2,155	2,136	2,075	6,366	1,600	1,531	1,431	4,562	81	78	84	243
43,549	35,635	41,863	121,067	25,011	22,428	26,603	74,042	1,324	1,237	1,504	4,064
3,219	1,350	2,926	7,495	2,434	1,038	2,120	5,592	85	39	78	202
16,524	9,574	15,163	41,261	7,183	4,889	7,771	19,843	466	205	355	1,027
1,082	808	1,298	3,188	709	514	721	1,944	26	19	32	76
2,068	931	2,019	5,018	1,497	560	1,313	3,370	49	23	52	123
922	595	739	2,256	841	542	647	2,030	23	16	20	59
7,879	5,628	6,835	20,342	4,865	4,045	4,835	13,745	225	191	233	649
6,853	4,816	6,934	18,603	4,318	3,229	4,717	12,264	176	132	186	495
4,534	2,466	3,418	10,418	2,128	1,507	2,102	5,737	88	48	75	211
1,243	1,281	1,612	4,136	772	502	704	1,978	29	36	45	110
44,324	27,449	40,944	112,717	24,747	16,826	24,930	66,503	1,167	708	1,077	2,953
6,305	3,873	5,503	15,681	4,695	3,158	4,447	12,300	185	135	198	518
550	536	542	1,628	384	343	324	1,051	18	18	20	57
8,743	3,837	5,200	17,780	6,339	2,575	3,829	12,743	217	100	132	449
5,368	5,200	6,055	16,623	2,874	2,917	3,790	9,581	177	201	235	613
26,713	12,547	15,325	55,085	14,725	8,310	10,306	33,341	694	310	397	1,401
2,212	1,236	1,864	5,312	1,496	784	1,192	3,472	61	35	54	150
49,891	27,229	34,989	112,109	30,513	18,087	23,888	72,488	1,353	799	1,036	3,188
1,449	938	1,511	3,898	1,086	747	1,023	2,856	34	25	40	99
1,615	732	909	3,256	1,168	545	692	2,405	39	20	22	81
1,298	1,231	1,519	4,148	976	888	1,125	2,989	45	48	62	155
3,011	3,650	4,624	11,285	2,039	2,367	3,265	7,671	96	133	164	392
16,594	8,424	8,499	33,517	11,050	5,836	6,020	22,906	483	238	244	965
1,045	843	1,033	2,921	726	506	637	1,869	28	19	25	72
3,221	1,988	2,496	7,705	2,209	1,377	1,727	5,313	88	59	73	220
3,946	3,887	4,342	12,175	1,889	1,923	2,438	6,250	113	118	127	358
856	1,045	1,388	3,289	658	724	988	2,370	23	35	42	100
1,419	1,173	1,444	4,036	908	685	830	2,423	42	36	40	117
3,547	2,409	3,364	9,320	1,939	1,632	2,119	5,690	92	68	94	254
38,001	26,320	31,229	95,550	24,648	17,230	20,864	62,742	1,083	798	933	2,814
845,256	677,372	820,531	2,343,159	437,064	374,374	443,262	1,254,700	36,228	35,103	44,123	115,454

TABLE 8 — HOLIDAY FLATS, UNITS AND HOUSES BY STATISTICAL DIVISION, VICTORIA

Particulars	Western District (SD) and Central Highlands (SD)						Loddon- Campaspe (SD)
	Melbourne (SD)	Barwon (SD)	Wimmera (SD)	Mallee (SD)			
LETTING ENTITIES, CAPACITY AND EMPLOYMENT							
<i>March quarter 1993—</i>							
Letting entities	36	20	10	8	9	6	
Flats, units and houses							
Single bedroom	664	43	10	44	23	24	
Multiple bedroom	662	431	88	50	74	25	
<i>Total flats, units and houses</i>	<i>1,326</i>	<i>474</i>	<i>98</i>	<i>94</i>	<i>97</i>	<i>49</i>	
Bed spaces	4,859	2,689	472	400	398	221	
Employment (persons) (a)	265	49	26	24	15	17	
<i>March quarter 1994—</i>							
Letting entities	41	23	14	9	8	6	
Flats, units and houses							
Single bedroom	657	44	23	52	22	24	
Multiple bedroom	755	453	100	59	69	26	
<i>Total flats, units and houses</i>	<i>1,412</i>	<i>497</i>	<i>123</i>	<i>111</i>	<i>91</i>	<i>50</i>	
Bed spaces	5,239	2,412	576	477	380	219	
Employment (persons) (a)	261	59	35	33	17	21	
UNIT NIGHTS OCCUPIED							
<i>March quarter 1993</i>	<i>69,578</i>	<i>16,487</i>	<i>5,046</i>	<i>4,675</i>	<i>4,424</i>	<i>2,915</i>	
<i>1994—</i>							
January	26,739	10,762	2,885	2,334	1,857	896	
February	21,020	5,289	1,719	1,268	878	739	
March	23,477	4,641	2,051	1,811	1,254	993	
<i>March quarter 1994</i>	<i>71,236</i>	<i>20,692</i>	<i>6,655</i>	<i>5,413</i>	<i>3,989</i>	<i>2,628</i>	
UNIT OCCUPANCY RATES (per cent)							
<i>March quarter 1993</i>	<i>58.3</i>	<i>38.6</i>	<i>62.5</i>	<i>55.3</i>	<i>50.7</i>	<i>66.1</i>	
<i>1994—</i>							
January	64.6	69.9	75.7	67.8	65.8	57.8	
February	56.2	38.0	49.9	40.8	34.5	52.8	
March	56.7	30.1	53.8	52.6	44.5	64.1	
<i>March quarter 1994</i>	<i>59.3</i>	<i>46.3</i>	<i>60.1</i>	<i>54.2</i>	<i>48.7</i>	<i>58.4</i>	
UNIT LETTINGS							
<i>March quarter 1993</i>	<i>16,218</i>	<i>2,975</i>	<i>1,344</i>	<i>1,245</i>	<i>880</i>	<i>690</i>	
<i>1994—</i>							
January	6,012	1,555	723	710	293	226	
February	5,182	1,268	510	560	220	208	
March	6,086	1,288	577	791	300	285	
<i>March quarter 1994</i>	<i>17,280</i>	<i>4,111</i>	<i>1,810</i>	<i>2,061</i>	<i>813</i>	<i>719</i>	
AVERAGE LENGTH OF STAY (days)							
<i>March quarter 1993</i>	<i>4.3</i>	<i>5.5</i>	<i>3.8</i>	<i>3.8</i>	<i>5.0</i>	<i>4.2</i>	
<i>1994—</i>							
January	4.4	6.9	4.0	3.3	6.3	4.0	
February	4.1	4.2	3.4	2.3	4.0	3.6	
March	3.9	3.6	3.6	2.3	4.2	3.5	
<i>March quarter 1994</i>	<i>4.1</i>	<i>5.0</i>	<i>3.7</i>	<i>2.6</i>	<i>4.9</i>	<i>3.7</i>	
TAKINGS FROM ACCOMMODATION (\$'000)							
<i>March quarter 1993</i>	<i>6,180</i>	<i>1,144</i>	<i>299</i>	<i>233</i>	<i>227</i>	<i>174</i>	
<i>1994—</i>							
January	2,430	778	196	150	105	52	
February	1,861	313	98	85	48	42	
March	2,162	298	103	110	66	71	
<i>March quarter 1994</i>	<i>6,453</i>	<i>1,388</i>	<i>397</i>	<i>345</i>	<i>218</i>	<i>164</i>	

TABLE 8 — HOLIDAY FLATS, UNITS AND HOUSES BY STATISTICAL DIVISION, VICTORIA—continued

Particulars	Victoria						Total
	Goulburn (SD)	Ovens- Murray (SD)	East Gippsland (SD)	Gippsland (SD)	Real estate agents	Other letting entities	
LETTING ENTITIES, CAPACITY AND EMPLOYMENT							
<i>March quarter 1993—</i>							
Letting entities	7	34	48	8	26	160	186
Flats, units and houses							
Single bedroom	20	52	81	19	50	930	980
Multiple bedroom	39	304	404	254	985	1,346	2,331
<i>Total flats, units and houses</i>	<i>59</i>	<i>356</i>	<i>485</i>	<i>273</i>	<i>1,035</i>	<i>2,276</i>	<i>3,311</i>
Bed spaces	306	1,927	2,444	1,563	6,231	9,048	15,279
Employment (persons) (a)	19	89	101	53	—	658	658
<i>March quarter 1994—</i>							
Letting entities	8	41	51	9	25	185	210
Flats, units and houses							
Single bedroom	20	57	81	33	53	960	1,013
Multiple bedroom	45	368	422	261	1,049	1,509	2,558
<i>Total flats, units and houses</i>	<i>65</i>	<i>425</i>	<i>503</i>	<i>294</i>	<i>1,102</i>	<i>2,469</i>	<i>3,571</i>
Bed spaces	334	2,225	2,491	1,767	6,140	9,980	16,120
Employment (persons) (a)	24	87	108	57	—	702	702
UNIT NIGHTS OCCUPIED							
<i>March quarter 1993</i>	<i>1,949</i>	<i>11,060</i>	<i>17,681</i>	<i>10,438</i>	<i>19,962</i>	<i>124,291</i>	<i>144,253</i>
<i>1994—</i>							
January	1,022	5,439	9,252	6,408	17,022	50,572	67,594
February	628	2,059	4,995	1,909	3,920	36,584	40,504
March	800	3,622	5,542	1,853	3,032	43,012	46,044
<i>March quarter 1994</i>	<i>2,450</i>	<i>11,120</i>	<i>19,789</i>	<i>10,170</i>	<i>23,974</i>	<i>130,168</i>	<i>154,142</i>
UNIT OCCUPANCY RATES (per cent)							
<i>March quarter 1993</i>	<i>36.7</i>	<i>34.7</i>	<i>40.5</i>	<i>42.5</i>	<i>21.4</i>	<i>60.9</i>	<i>48.6</i>
<i>1994—</i>							
January	50.7	41.3	59.3	70.3	53.6	66.1	62.4
February	34.5	17.3	35.5	23.2	13.7	52.9	41.4
March	39.7	27.5	35.5	20.3	9.5	56.2	42.5
<i>March quarter 1994</i>	<i>41.9</i>	<i>29.1</i>	<i>43.7</i>	<i>38.4</i>	<i>26.0</i>	<i>58.6</i>	<i>49.0</i>
UNIT LETTINGS							
<i>March quarter 1993</i>	<i>521</i>	<i>2,090</i>	<i>3,814</i>	<i>1,611</i>	<i>2,215</i>	<i>29,173</i>	<i>31,388</i>
<i>1994—</i>							
January	236	1,085	1,733	840	1,301	11,612	13,413
February	231	611	1,241	428	572	9,387	10,459
March	350	1,087	1,496	428	519	12,169	12,688
<i>March quarter 1994</i>	<i>817</i>	<i>2,783</i>	<i>4,470</i>	<i>1,696</i>	<i>2,392</i>	<i>33,668</i>	<i>36,560</i>
AVERAGE LENGTH OF STAY (days)							
<i>March quarter 1993</i>	<i>3.7</i>	<i>5.3</i>	<i>4.6</i>	<i>6.5</i>	<i>9.0</i>	<i>4.3</i>	<i>4.6</i>
<i>1994—</i>							
January	4.3	5.0	5.3	7.6	9.5	4.4	5.0
February	2.7	3.4	4.0	4.5	6.9	3.7	3.9
March	2.3	3.3	3.7	4.3	5.8	3.5	3.6
<i>March quarter 1994</i>	<i>3.0</i>	<i>4.0</i>	<i>4.4</i>	<i>6.0</i>	<i>8.3</i>	<i>3.9</i>	<i>4.2</i>
TAKINGS FROM ACCOMMODATION (\$'000)							
<i>March quarter 1993</i>	<i>109</i>	<i>491</i>	<i>1,037</i>	<i>541</i>	<i>1,167</i>	<i>9,267</i>	<i>10,435</i>
<i>1994—</i>							
January	59	292	637	340	1,040	3,999	5,038
February	34	87	249	117	183	2,751	2,934
March	51	151	278	125	127	3,288	3,414
<i>March quarter 1994</i>	<i>144</i>	<i>530</i>	<i>1,164</i>	<i>583</i>	<i>1,349</i>	<i>10,037</i>	<i>11,386</i>

(a) Employment numbers exclude real estate agents and their employees.

TABLE 9—CARAVAN PARKS: STATISTICAL DIVISIONS AND SELECTED

Statistical Divisions and Selected Statistical Local Areas	Capacity					Total	Sites occupied by long- term guests	Other sites perman- ently reserved	Employ- ment (persons)
	Establish- ments	On-site vans	Other powered sites	Unpow- ered sites	Cabins, flats etc.				
Cranbourne (S)	5	122	263	23	3	411	196	35	20
Flinders (S)	39	105	3,561	541	99	4,306	175	1,903	109
Hastings (S)	6	33	281	280	6	600	78	99	14
Healesville (S)	3	13	152	15	30	210	56	21	14
Springvale (C)	5	216	477	72	10	775	584	—	28
Sunshine (C)	3	74	141	16	4	235	77	—	9
Upper Yarra Pt. A	3	15	183	205	2	405	64	42	6
Werribee (C)	4	13	217	20	22	272	157	6	14
Balance	24	437	1,630	88	296	2,451	1,253	47	118
<i>Melbourne (SD)</i>	<i>92</i>	<i>1,028</i>	<i>6,905</i>	<i>1,260</i>	<i>472</i>	<i>9,665</i>	<i>2,640</i>	<i>2,153</i>	<i>332</i>
Barrabool (S) Pts. A and B	6	39	815	6	31	891	24	263	21
Bellarine (RC) Pts. A and B	16	65	3,684	347	227	4,323	185	1,716	77
Colac (C)	3	15	105	18	3	141	29	7	8
Otway (S)	10	36	513	335	62	946	7	223	28
Queenscliffe (B)	8	2	700	—	25	727	14	414	26
South Barwon (C) Pts. A and B	13	116	2,518	147	116	2,897	277	1,169	81
Winchelsea (S)	6	5	368	35	6	414	10	8	9
<i>Barwon (SD)</i>	<i>62</i>	<i>278</i>	<i>8,703</i>	<i>888</i>	<i>470</i>	<i>10,339</i>	<i>546</i>	<i>3,800</i>	<i>250</i>
Port Fairy (B)	6	23	920	696	32	1,671	11	41	16
Portland (C)	5	42	396	58	38	534	69	6	16
Warrnambool (C)	6	43	1,294	121	131	1,589	56	4	52
Warrnambool (S)	3	14	218	24	—	256	—	—	4
Balance	24	50	780	867	56	1,753	49	66	42
<i>Western District (SD)</i>	<i>44</i>	<i>172</i>	<i>3,608</i>	<i>1,766</i>	<i>257</i>	<i>5,803</i>	<i>185</i>	<i>117</i>	<i>130</i>
Ballaarat (C)	4	77	354	152	43	626	67	1	25
Bailan (S)	4	7	131	18	18	174	26	77	7
Balance	16	60	944	537	78	1,619	147	211	33
<i>Central Highlands (SD)</i>	<i>24</i>	<i>144</i>	<i>1,429</i>	<i>707</i>	<i>139</i>	<i>2,419</i>	<i>240</i>	<i>289</i>	<i>65</i>
Kowree (S)	3	14	74	54	2	144	1	13	7
Stawell (S)	5	27	413	534	106	1,080	—	90	35
Wimmera (S)	4	17	44	26	19	106	—	—	10
Balance	15	61	635	374	56	1,126	33	31	32
<i>Wimmera (SD)</i>	<i>27</i>	<i>119</i>	<i>1,166</i>	<i>988</i>	<i>183</i>	<i>2,456</i>	<i>84</i>	<i>134</i>	<i>84</i>
Kerang (B) and Kerang (S)	7	37	273	205	24	539	18	76	15
Mildura (C)	13	206	797	329	151	1,483	241	16	62
Mildura (S) Pts. A and B	8	68	501	132	52	753	118	4	22
Swan Hill (C)	5	34	420	136	66	656	33	17	26
Swan Hill (S)	6	52	270	198	14	534	27	9	21
Balance	8	12	198	228	2	440	10	—	13
<i>Mailee (SD)</i>	<i>47</i>	<i>409</i>	<i>2,459</i>	<i>1,228</i>	<i>309</i>	<i>4,405</i>	<i>447</i>	<i>122</i>	<i>159</i>
Echuca (C)	5	70	571	118	36	795	100	190	25
Korong (S)	4	14	123	150	8	295	32	17	6
Marong (RC) Pts A & B	5	47	331	158	33	569	73	109	15
McIvor (S)	3	10	641	72	—	723	13	505	16
Rochester (S)	4	21	266	96	5	388	18	117	10
Balance	26	157	2,027	764	97	3,045	356	875	76
<i>Loddon-Campaspe (SD)</i>	<i>47</i>	<i>319</i>	<i>3,959</i>	<i>1,358</i>	<i>179</i>	<i>5,815</i>	<i>592</i>	<i>1,813</i>	<i>148</i>

STATISTICAL LOCAL AREAS (s), VICTORIA, MARCH QUARTER 1994

<i>Site nights occupied</i>				<i>Site occupancy rates (per cent)</i>				<i>Takings from accommodation (\$'000)</i>			
<i>Jan.</i>	<i>Feb.</i>	<i>Mar.</i>	<i>Mar. qtr</i>	<i>Jan.</i>	<i>Feb.</i>	<i>Mar.</i>	<i>Mar. qtr</i>	<i>Jan.</i>	<i>Feb.</i>	<i>Mar.</i>	<i>Mar. qtr</i>
8,922	8,121	8,943	25,986	70.0	70.6	70.2	70.3	94	91	106	290
102,926	67,446	69,287	239,659	77.1	55.9	51.9	61.8	646	303	268	1,217
11,738	5,417	6,102	23,257	63.1	32.2	32.8	43.1	101	39	46	187
4,377	3,680	3,987	12,044	67.2	62.6	61.2	63.7	51	34	43	127
18,573	17,076	18,458	54,107	77.3	78.7	76.8	77.6	192	187	195	574
3,846	3,758	4,048	11,652	52.8	57.1	55.6	55.1	29	29	31	90
4,293	3,620	3,988	11,901	34.2	31.9	31.8	32.7	40	25	32	97
5,223	4,725	5,285	15,233	61.9	62.0	62.7	62.2	43	40	45	128
55,201	50,387	54,440	160,028	72.7	73.4	71.6	72.5	710	645	708	2,063
<i>215,099</i>	<i>164,230</i>	<i>174,538</i>	<i>553,867</i>	<i>71.8</i>	<i>60.7</i>	<i>58.3</i>	<i>63.7</i>	<i>1,906</i>	<i>1,393</i>	<i>1,475</i>	<i>4,774</i>
22,271	12,881	14,499	49,651	80.6	51.6	52.5	61.9	388	77	97	562
101,597	66,351	71,618	239,566	75.8	54.8	53.4	61.6	442	166	164	772
1,706	1,402	1,645	4,753	39.0	35.5	37.6	37.3	15	11	13	39
18,422	9,561	9,698	37,681	62.8	36.1	33.1	44.3	220	90	106	417
19,519	13,259	13,919	46,697	86.6	65.1	61.8	71.4	255	131	117	504
67,527	51,966	52,221	171,714	75.2	64.1	58.1	65.9	461	225	264	950
10,643	2,823	2,468	15,934	82.9	24.4	19.2	42.8	206	42	35	283
<i>241,685</i>	<i>158,243</i>	<i>166,068</i>	<i>565,996</i>	<i>75.4</i>	<i>54.7</i>	<i>51.8</i>	<i>60.8</i>	<i>1,987</i>	<i>742</i>	<i>796</i>	<i>3,526</i>
13,965	4,200	10,664	28,829	27.0	9.0	20.6	19.2	238	48	162	448
5,300	3,332	3,681	12,313	32.0	22.3	22.2	25.6	72	43	48	162
35,654	9,943	9,705	55,302	72.4	22.3	19.7	38.7	686	203	212	1,101
2,454	688	455	3,597	30.9	9.6	5.7	15.6	45	12	8	64
12,297	6,716	7,744	26,757	22.6	13.7	14.3	17.0	154	78	92	323
<i>69,670</i>	<i>24,879</i>	<i>32,249</i>	<i>126,798</i>	<i>38.7</i>	<i>15.3</i>	<i>17.9</i>	<i>24.3</i>	<i>1,194</i>	<i>383</i>	<i>522</i>	<i>2,098</i>
6,775	5,120	6,368	18,263	34.9	29.2	32.8	32.4	128	87	118	333
3,534	3,388	3,734	10,656	65.5	69.5	69.2	68.0	25	20	21	65
15,052	12,937	14,080	42,069	30.0	28.5	28.1	28.9	143	94	109	345
<i>25,361</i>	<i>21,445</i>	<i>24,182</i>	<i>70,988</i>	<i>33.8</i>	<i>31.7</i>	<i>32.2</i>	<i>32.6</i>	<i>296</i>	<i>201</i>	<i>247</i>	<i>744</i>
623	534	576	1,733	14.0	13.2	12.9	13.4	5	4	3	12
14,158	6,164	10,791	31,113	42.3	20.4	32.2	32.0	287	134	195	616
927	278	457	1,662	28.2	9.4	13.9	17.4	27	9	15	51
6,384	4,680	5,907	16,971	18.3	14.8	16.9	16.7	75	51	77	203
<i>22,092</i>	<i>11,656</i>	<i>17,731</i>	<i>51,479</i>	<i>29.0</i>	<i>16.9</i>	<i>23.3</i>	<i>23.3</i>	<i>394</i>	<i>198</i>	<i>290</i>	<i>882</i>
3,881	3,153	3,823	10,857	23.2	20.9	22.9	22.4	46	23	23	92
18,886	15,962	18,576	53,424	41.1	38.4	40.4	40.0	329	226	282	837
7,193	6,428	6,735	20,356	30.8	30.5	28.9	30.0	70	63	67	200
4,910	2,514	3,952	11,376	24.1	13.7	19.4	19.3	83	37	69	190
4,303	2,220	2,691	9,214	26.0	14.8	16.3	19.2	47	26	30	103
1,321	812	1,009	3,142	9.7	6.6	7.4	7.9	11	6	8	25
<i>40,494</i>	<i>31,089</i>	<i>36,786</i>	<i>108,369</i>	<i>29.7</i>	<i>25.2</i>	<i>26.9</i>	<i>27.3</i>	<i>587</i>	<i>381</i>	<i>480</i>	<i>1,448</i>
12,827	10,228	11,765	34,820	52.0	45.9	47.7	48.7	156	90	149	395
2,545	1,837	2,193	6,575	27.8	22.2	24.0	24.8	19	13	15	46
7,969	7,052	7,859	22,880	45.2	44.3	44.6	44.7	62	53	66	181
18,445	16,660	18,445	53,550	82.3	82.3	82.3	82.3	47	38	40	125
4,647	4,230	4,531	13,408	38.6	38.9	37.7	38.4	29	17	19	65
49,606	40,038	47,611	137,255	52.6	47.0	50.4	50.1	345	227	302	874
<i>96,039</i>	<i>80,045</i>	<i>92,404</i>	<i>268,488</i>	<i>53.3</i>	<i>49.2</i>	<i>51.3</i>	<i>51.3</i>	<i>657</i>	<i>437</i>	<i>591</i>	<i>1,686</i>

TABLE 9 — CARAVAN PARKS: STATISTICAL DIVISIONS AND SELECTED

Statistical Divisions and Selected Statistical Local Areas	Capacity					Total	Sites occupied by long-term guests	Other sites permanently reserved	Employment (persons)
	Establishments	On-site vans	Other powered sites	Unpowered sites	Cabins, flats etc.				
Alexandra (S)	12	58	1,046	550	50	1,704	41	695	54
Benalla (S)	3	24	85	52	—	161	15	19	8
Cobram (S)	5	34	426	573	16	1,049	47	278	15
Mansfield (S)	8	26	840	125	72	1,063	5	670	34
Nathalia (S)	5	17	217	104	8	346	26	129	12
Rodney (S) Pts. A and B	6	76	259	52	14	401	39	10	9
Shepparton (C)	5	39	458	125	48	670	181	103	17
Waranga (S)	3	24	163	190	—	377	19	99	6
Balance	20	139	1,302	407	79	1,927	300	674	48
<i>Goulburn (SD)</i>	67	437	4,796	2,178	287	7,698	723	2,677	203
Beechworth (S)	3	31	171	105	28	335	20	53	10
Bright (S)	16	86	1,345	560	161	2,152	6	453	40
Oxley (S)	4	18	86	102	8	214	8	13	6
Tallangatta (S) Pts. A and B	5	18	324	181	13	536	8	82	10
Wangaratta (C)	3	42	259	95	28	424	52	9	14
Wodonga (RC)	4	38	384	120	11	553	84	134	10
Yarrawonga (S)	5	14	555	181	37	787	59	113	14
Balance	8	51	443	339	25	858	60	78	18
<i>Ovens Murray (SD)</i>	48	298	3,567	1,683	311	5,859	297	935	122
Avon (S)	5	27	107	72	4	210	8	11	12
Bairnsdale (S) Pts. A and B	8	49	639	191	25	904	90	324	19
Maffra (S)	6	10	392	306	6	714	16	212	16
Orbost (S)	13	90	836	672	45	1,643	29	100	36
Tambo (S) Pts. A and B	37	184	1,330	351	259	2,124	119	355	133
Balance	6	48	417	283	35	783	93	80	21
<i>East Gippsland (SD)</i>	75	408	3,721	1,875	374	6,378	355	1,082	237
Alberton (S)	8	34	443	156	22	655	13	268	22
Bass (S)	6	26	397	67	2	492	10	223	14
Buin Buin (S)	5	40	168	100	36	344	70	37	10
Phillip Island (S)	13	96	1,219	92	38	1,445	9	735	56
Rosedale (S)	3	23	381	81	8	493	11	137	8
South Gippsland (S)	9	36	332	389	26	783	15	279	20
Traralgon (C)	4	60	381	—	40	481	175	2	9
Wonthaggi (B)	3	22	325	30	3	380	37	83	8
Woorayl (S)	7	18	640	185	17	860	14	405	21
Balance	8	28	522	296	31	877	112	70	19
<i>Gippsland (SD)</i>	66	383	4,808	1,396	223	6,810	466	2,239	187
<i>Victoria</i>									
Short-term parks	441	2,055	36,452	13,261	2,284	54,052	1,849	14,976	1,433
Long-term parks	158	1,940	8,669	2,066	920	13,595	4,726	385	484
Total	599	3,995	45,121	15,327	3,204	67,647	6,575	15,361	1,917

(a) Permanently reserved sites (including on-site vans and cabins permanently reserved) have been recorded continuously as site nights occupied. See Explanatory Notes 11 and 14.

STATISTICAL LOCAL AREAS (s), VICTORIA, MARCH QUARTER 1994—continued

<i>Site nights occupied</i>				<i>Site occupancy rates (per cent)</i>				<i>Takeings from accommodation (\$'000)</i>			
<i>Jan.</i>	<i>Feb.</i>	<i>Mar.</i>	<i>Mar. qtr</i>	<i>Jan.</i>	<i>Feb.</i>	<i>Mar.</i>	<i>Mar. qtr</i>	<i>Jan.</i>	<i>Feb.</i>	<i>Mar.</i>	<i>Mar. qtr</i>
26,852	22,418	25,630	74,900	50.8	47.0	48.5	48.8	196	90	138	424
1,202	974	1,176	3,352	24.1	21.6	23.6	23.1	11	6	6	23
11,539	10,220	11,183	32,942	35.5	34.8	34.4	34.9	139	50	67	256
24,577	19,825	22,005	66,407	74.6	66.6	66.8	69.4	215	170	109	493
5,656	4,527	5,062	15,245	52.7	46.7	47.2	49.0	29	11	13	53
4,030	3,900	3,701	11,631	32.4	34.7	29.8	32.2	45	45	43	134
12,503	10,650	11,745	34,898	60.2	56.8	56.5	57.9	87	73	79	239
4,496	3,940	4,166	12,602	38.5	37.3	35.6	37.1	9	6	25	40
34,044	29,863	32,703	96,610	57.0	55.3	54.7	55.7	225	147	143	515
<i>124,899</i>	<i>106,317</i>	<i>117,371</i>	<i>348,587</i>	<i>52.3</i>	<i>49.3</i>	<i>49.2</i>	<i>50.3</i>	<i>955</i>	<i>597</i>	<i>624</i>	<i>2,176</i>
3,052	2,452	3,321	8,825	29.4	26.1	32.0	29.3	30	16	26	72
28,573	14,697	18,333	61,603	42.8	24.4	27.5	31.8	388	92	165	645
995	765	1,068	2,828	15.0	12.8	16.1	14.7	9	5	10	24
5,313	2,935	3,529	11,777	32.0	19.6	21.2	24.4	48	11	16	74
3,528	2,632	3,244	9,404	26.8	22.2	24.7	24.6	45	33	39	118
8,477	7,342	7,810	23,629	49.4	47.4	45.6	47.5	56	38	39	133
12,237	6,409	8,039	26,685	50.2	29.1	33.0	37.7	110	58	69	237
8,560	5,451	6,361	20,372	32.2	22.7	23.9	26.4	72	38	45	154
<i>70,735</i>	<i>42,683</i>	<i>51,705</i>	<i>165,123</i>	<i>38.9</i>	<i>26.0</i>	<i>28.5</i>	<i>31.3</i>	<i>757</i>	<i>292</i>	<i>409</i>	<i>1,458</i>
1,316	761	987	3,064	20.2	12.9	15.2	16.2	19	9	15	42
15,407	12,950	14,079	42,436	55.0	51.2	50.2	52.2	117	59	64	239
10,718	7,611	8,533	26,862	48.4	38.1	38.6	41.8	75	14	16	105
24,885	10,089	10,366	45,340	48.9	21.9	20.4	30.7	283	85	86	454
36,817	22,146	22,431	81,394	55.9	37.2	34.1	42.6	654	228	283	1,166
8,998	6,412	7,651	23,061	37.1	29.2	31.5	32.7	114	57	75	247
<i>98,141</i>	<i>59,969</i>	<i>64,047</i>	<i>222,157</i>	<i>49.6</i>	<i>33.6</i>	<i>32.4</i>	<i>38.7</i>	<i>1,262</i>	<i>452</i>	<i>539</i>	<i>2,252</i>
12,456	10,014	10,903	33,373	61.3	54.6	53.7	56.6	108	80	85	273
9,638	6,869	7,913	24,420	63.2	49.9	51.9	55.1	69	30	30	129
3,673	3,409	3,885	10,967	34.4	35.4	36.4	35.4	28	26	30	84
33,528	23,836	25,462	82,826	74.8	58.9	56.8	63.7	488	129	155	771
5,292	4,990	5,348	15,630	34.6	36.1	35.0	35.2	39	20	17	76
14,922	9,451	10,638	35,011	61.5	43.1	43.8	49.7	136	56	74	265
5,326	5,287	5,631	16,244	35.7	39.3	37.8	37.5	44	43	44	131
7,206	3,967	4,128	15,301	61.2	37.3	35.0	44.7	81	17	25	122
18,714	13,221	14,487	46,422	70.2	54.9	54.3	60.0	144	69	65	277
7,208	6,255	6,841	20,304	26.5	25.5	25.2	25.7	44	38	46	129
<i>117,963</i>	<i>87,299</i>	<i>95,236</i>	<i>300,498</i>	<i>55.9</i>	<i>45.8</i>	<i>45.1</i>	<i>49.0</i>	<i>1,180</i>	<i>506</i>	<i>570</i>	<i>2,256</i>
919,325	609,291	675,620	2,204,236	54.9	40.3	40.3	45.3	8,974	3,738	4,472	17,183
202,853	178,564	196,697	578,114	48.1	46.9	46.7	47.2	2,202	1,843	2,071	6,116
<i>1,122,178</i>	<i>787,855</i>	<i>872,317</i>	<i>2,782,350</i>	<i>53.5</i>	<i>41.6</i>	<i>41.6</i>	<i>45.7</i>	<i>11,176</i>	<i>5,581</i>	<i>6,542</i>	<i>23,299</i>

TABLE 10—CARAVAN PARKS BY STATISTICAL DIVISION, VICTORIA

Particulars	Melbourne (SD)			Barwon (SD)			Western District (SD)			Central Highlands (SD)		
	Short-term	Long-term	Total	Short-term	Long-term	Total	Short-term	Long-term	Total	Short-term	Long-term	Total
ESTABLISHMENTS, CAPACITY AND EMPLOYMENT												
March quarter 1993—												
Establishments	49	42	91	51	11	62	33	11	44	17	7	24
Capacity												
On-site vans	201	852	1,053	167	112	279	114	69	183	95	52	147
Other powered sites	4,078	2,800	6,878	7,864	664	8,528	3,069	528	3,597	1,165	217	1,382
Unpowered sites	977	280	1,257	948	52	1,000	1,596	117	1,713	615	76	691
Cabins, flats, etc.	161	234	395	384	80	464	198	45	243	82	47	129
Total capacity	5,417	4,166	9,583	9,363	908	10,271	4,977	759	5,736	1,957	392	2,349
Sites occupied by long-term guests	239	2,392	2,631	170	350	520	83	113	196	147	108	255
Other sites permanently reserved (a)	2,040	147	2,187	3,656	15	3,671	103	10	113	228	14	242
Employment (persons)	146	178	324	212	39	251	97	33	130	51	16	67
March quarter 1994—												
Establishments	50	42	92	51	11	62	31	13	44	18	6	24
Capacity												
On-site vans	175	853	1,028	172	106	278	87	85	172	99	45	144
Other powered sites	4,101	2,804	6,905	8,024	679	8,703	2,990	618	3,608	1,258	171	1,429
Unpowered sites	963	297	1,260	844	44	888	1,595	171	1,766	664	43	707
Cabins, flats, etc.	200	272	472	389	81	470	206	51	257	93	46	139
Total capacity	5,439	4,226	9,665	9,429	910	10,339	4,878	925	5,803	2,114	305	2,419
Sites occupied by long-term guests	230	2,410	2,640	201	345	546	72	113	185	144	96	240
Other sites permanently reserved (a)	2,062	91	2,153	3,776	24	3,800	105	12	117	279	10	289
Employment (persons)	156	176	332	212	38	250	95	35	130	50	15	65
SITE NIGHTS OCCUPIED ('000) (a)												
March quarter 1993	284.8	261.3	546.2	476.5	42.2	518.7	102.8	17.2	120.0	59.5	14.3	73.8
1994—												
January	123.9	91.2	215.1	226.9	14.8	241.7	59.0	10.7	69.7	20.8	4.6	25.4
February	80.8	83.5	164.2	146.1	12.1	158.2	18.7	6.2	24.9	17.2	4.2	21.4
March	83.1	91.4	174.5	151.2	14.9	166.1	25.6	6.6	32.2	19.9	4.3	24.2
March quarter 1994	287.7	266.1	553.9	524.2	41.8	566.0	103.3	23.5	126.8	57.9	13.1	71.0
SITE OCCUPANCY RATES (per cent) (a)												
March quarter 1993	58.4	69.7	63.3	56.5	51.6	56.1	23.0	25.1	23.2	33.8	40.6	34.9
1994—												
January	73.5	69.6	71.8	77.6	52.5	75.4	39.0	37.2	38.7	31.7	48.6	33.8
February	53.0	70.5	60.7	55.3	47.5	54.7	13.7	23.8	15.3	29.1	49.2	31.7
March	49.3	69.8	58.3	51.7	52.8	51.8	16.9	23.2	17.9	30.3	45.8	32.2
March quarter 1994	58.8	70.0	63.7	61.8	51.1	60.8	23.5	28.2	24.3	30.4	47.8	32.6
TAKINGS FROM ACCOMMODATION (\$'000)												
March quarter 1993	1,561	2,884	4,445	3,371	405	3,776	1,682	204	1,885	629	148	777
1994—												
January	901	1,005	1,906	1,816	172	1,987	1,059	135	1,194	246	49	296
February	458	935	1,393	630	112	742	311	72	383	157	44	201
March	443	1,032	1,475	652	145	796	446	76	522	202	45	247
March quarter 1994	1,801	2,973	4,774	3,098	428	3,526	1,815	283	2,098	605	139	744

TABLE 10 — CARAVAN PARKS BY STATISTICAL DIVISION, VICTORIA—continued

Particulars	Wimmera (SD)			Mallee (SD)			Loddon-Campaspe (SD)			Goulburn (SD)		
	Short-term	Long-term	Total	Short-term	Long-term	Total	Short-term	Long-term	Total	Short-term	Long-term	Total
ESTABLISHMENTS, CAPACITY AND EMPLOYMENT												
<i>March quarter 1993—</i>												
Establishments	21	5	26	34	13	47	32	14	46	48	19	67
Capacity												
On-site vans	n.p.	n.p.	164	280	164	444	186	98	284	229	220	449
Other powered sites	n.p.	n.p.	1,193	1,669	800	2,469	3,160	706	3,866	4,040	642	4,682
Unpowered sites	n.p.	n.p.	1,054	1,049	186	1,235	869	367	1,236	1,972	151	2,123
Cabins, flats, etc.	n.p.	n.p.	115	227	55	282	115	53	168	198	74	272
<i>Total capacity</i>	<i>n.p.</i>	<i>n.p.</i>	<i>2,526</i>	<i>3,225</i>	<i>1,205</i>	<i>4,430</i>	<i>4,330</i>	<i>1,224</i>	<i>5,554</i>	<i>6,439</i>	<i>1,087</i>	<i>7,526</i>
Sites occupied by long-term guests	n.p.	n.p.	101	140	296	436	252	316	568	305	363	668
Other sites permanently reserved (a)	n.p.	n.p.	126	85	8	93	1,694	81	1,775	2,628	25	2,653
Employment (persons)	n.p.	n.p.	69	124	37	161	102	38	140	168	43	211
<i>March quarter 1994—</i>												
Establishments	22	5	27	32	15	47	34	13	47	46	21	67
Capacity												
On-site vans	92	27	119	233	176	409	176	143	319	215	222	437
Other powered sites	973	193	1,166	1,575	884	2,459	3,346	613	3,959	4,029	767	4,796
Unpowered sites	914	74	988	969	259	1,228	1,011	347	1,358	1,962	216	2,178
Cabins, flats, etc.	151	32	183	219	90	309	134	45	179	185	102	287
<i>Total capacity</i>	<i>2,130</i>	<i>326</i>	<i>2,456</i>	<i>2,996</i>	<i>1,409</i>	<i>4,405</i>	<i>4,667</i>	<i>1,148</i>	<i>5,815</i>	<i>6,391</i>	<i>1,307</i>	<i>7,698</i>
Sites occupied by long-term guests	40	44	84	148	299	447	268	324	592	315	408	723
Other sites permanently reserved (a)	116	18	134	108	14	122	1,744	69	1,813	2,639	38	2,677
Employment (persons)	70	14	84	114	45	159	110	38	148	158	45	203
SITE NIGHTS OCCUPIED ('000) (a)												
<i>March quarter 1993</i>	<i>n.p.</i>	<i>n.p.</i>	<i>51.8</i>	<i>70.0</i>	<i>41.1</i>	<i>111.1</i>	<i>219.3</i>	<i>45.0</i>	<i>264.2</i>	<i>305.4</i>	<i>43.7</i>	<i>349.0</i>
<i>1994—</i>												
January	19.3	2.8	22.1	25.3	15.2	40.5	80.7	15.4	96.0	107.4	17.5	124.9
February	9.6	2.1	11.7	17.2	13.9	31.1	66.0	14.0	80.0	90.8	15.6	106.3
March	15.4	2.4	17.7	21.7	15.1	36.8	76.6	15.8	92.4	101.0	16.3	117.4
<i>March quarter 1994</i>	<i>44.3</i>	<i>7.2</i>	<i>51.5</i>	<i>64.1</i>	<i>44.2</i>	<i>108.4</i>	<i>233.3</i>	<i>45.2</i>	<i>268.5</i>	<i>299.2</i>	<i>49.4</i>	<i>348.6</i>
SITE OCCUPANCY RATES (per cent) (a)												
<i>March quarter 1993</i>	<i>n.p.</i>	<i>n.p.</i>	<i>22.8</i>	<i>24.1</i>	<i>37.9</i>	<i>27.9</i>	<i>56.3</i>	<i>40.8</i>	<i>52.9</i>	<i>52.7</i>	<i>44.6</i>	<i>51.5</i>
<i>1994—</i>												
January	29.3	27.3	29.0	27.2	34.8	29.7	55.8	43.2	53.3	54.2	43.1	52.3
February	16.1	22.6	16.9	20.5	35.3	25.2	50.5	43.6	49.2	50.7	42.5	49.3
March	23.3	23.5	23.3	23.4	34.5	26.9	53.0	44.4	51.3	51.0	40.3	49.2
<i>March quarter 1994</i>	<i>23.1</i>	<i>24.5</i>	<i>23.3</i>	<i>23.8</i>	<i>34.9</i>	<i>27.3</i>	<i>53.2</i>	<i>43.7</i>	<i>51.3</i>	<i>52.0</i>	<i>42.0</i>	<i>50.3</i>
TAKINGS FROM ACCOMMODATION (\$'000)												
<i>March quarter 1993</i>	<i>n.p.</i>	<i>n.p.</i>	<i>769</i>	<i>1,024</i>	<i>489</i>	<i>1,513</i>	<i>1,067</i>	<i>305</i>	<i>1,373</i>	<i>1,494</i>	<i>439</i>	<i>1,933</i>
<i>1994—</i>												
January	365	29	394	403	185	587	525	133	657	774	181	955
February	179	20	198	228	153	381	322	115	437	428	169	597
March	258	32	290	303	177	480	455	136	591	456	167	624
<i>March quarter 1994</i>	<i>802</i>	<i>80</i>	<i>882</i>	<i>933</i>	<i>515</i>	<i>1,448</i>	<i>1,302</i>	<i>384</i>	<i>1,686</i>	<i>1,658</i>	<i>517</i>	<i>2,176</i>

TABLE 10 — CARAVAN PARKS BY STATISTICAL DIVISION, VICTORIA—continued

Particulars	Ovens-Murray (SD)			East Gippsland (SD)			Gippsland (SD)			Victoria		
	Short-term	Long-term	Total	Short-term	Long-term	Total	Short-term	Long-term	Total	Short-term	Long-term	Total
ESTABLISHMENTS, CAPACITY AND EMPLOYMENT												
<i>March quarter 1993—</i>												
Establishments	46	3	49	63	10	73	50	16	66	444	151	595
Capacity												
On-site vans	n.p.	n.p.	298	336	95	431	214	148	362	2,234	1,860	4,094
Other powered sites	n.p.	n.p.	3,574	3,097	508	3,605	3,724	1,035	4,759	36,228	8,305	44,533
Unpowered sites	n.p.	n.p.	1,631	1,663	270	1,933	1,058	234	1,292	13,313	1,852	15,165
Cabins, flats, etc.	n.p.	n.p.	293	300	53	353	112	87	199	2,160	753	2,913
<i>Total capacity</i>	<i>n.p.</i>	<i>n.p.</i>	<i>5,796</i>	<i>5,396</i>	<i>926</i>	<i>6,322</i>	<i>5,108</i>	<i>1,504</i>	<i>6,612</i>	<i>53,935</i>	<i>12,770</i>	<i>66,705</i>
Sites occupied by long-term guests	n.p.	n.p.	288	183	137	320	91	419	510	1,909	4,584	6,493
Other sites permanently reserved (a)	n.p.	n.p.	888	987	45	1,032	2,039	42	2,081	14,444	417	14,861
Employment (persons)	n.p.	n.p.	130	194	27	221	127	35	162	1,403	463	1,866
<i>March quarter 1994—</i>												
Establishments	40	8	48	65	10	75	52	14	66	441	158	599
Capacity												
On-site vans	216	82	298	342	66	408	248	135	383	2,055	1,940	3,995
Other powered sites	3,088	479	3,567	3,184	537	3,721	3,884	924	4,808	36,452	8,669	45,121
Unpowered sites	1,588	95	1,683	1,573	302	1,875	1,178	218	1,396	13,261	2,066	15,327
Cabins, flats, etc.	265	46	311	325	49	374	117	106	223	2,284	920	3,204
<i>Total capacity</i>	<i>5,157</i>	<i>702</i>	<i>5,859</i>	<i>5,424</i>	<i>954</i>	<i>6,378</i>	<i>5,427</i>	<i>1,383</i>	<i>6,810</i>	<i>54,052</i>	<i>13,595</i>	<i>67,647</i>
Sites occupied by long-term guests	124	173	297	208	147	355	99	367	466	1,849	4,726	6,575
Other sites permanently reserved (a)	884	51	935	1,037	45	1,082	2,226	13	2,239	14,976	385	15,361
Employment (persons)	104	18	122	208	29	237	156	31	187	1,433	484	1,917
SITE NIGHTS OCCUPIED ('000) (a)												
<i>March quarter 1993</i>	<i>n.p.</i>	<i>n.p.</i>	<i>171.8</i>	<i>188.5</i>	<i>26.2</i>	<i>214.7</i>	<i>256.3</i>	<i>47.8</i>	<i>304.0</i>	<i>2,172.8</i>	<i>552.5</i>	<i>2,725.4</i>
<i>1994—</i>												
January	62.0	8.7	70.7	88.6	9.5	98.1	105.5	12.5	118.0	919.3	202.9	1,122.2
February	35.0	7.7	42.7	52.8	7.1	60.0	75.1	12.2	87.3	609.3	178.6	787.9
March	43.2	8.5	51.7	55.9	8.1	64.0	82.1	13.2	95.2	675.6	196.7	872.3
<i>March quarter 1994</i>	<i>140.2</i>	<i>24.9</i>	<i>165.1</i>	<i>197.4</i>	<i>24.8</i>	<i>222.3</i>	<i>262.6</i>	<i>37.9</i>	<i>300.5</i>	<i>2,204.2</i>	<i>578.1</i>	<i>2,782.3</i>
SITE OCCUPANCY RATES (per cent) (a)												
<i>March quarter 1993</i>	<i>n.p.</i>	<i>n.p.</i>	<i>32.9</i>	<i>38.8</i>	<i>31.4</i>	<i>37.7</i>	<i>55.7</i>	<i>35.3</i>	<i>51.1</i>	<i>44.8</i>	<i>48.1</i>	<i>45.4</i>
<i>1994—</i>												
January	38.8	40.0	38.9	52.7	32.3	49.6	62.7	29.1	55.9	54.9	48.1	53.5
February	24.2	39.0	26.0	34.8	26.7	33.6	49.4	31.6	45.8	40.3	46.9	41.6
March	27.0	39.2	28.5	33.3	27.5	32.4	48.8	30.7	45.1	40.3	46.7	41.6
<i>March quarter 1994</i>	<i>30.2</i>	<i>39.4</i>	<i>31.3</i>	<i>40.4</i>	<i>28.9</i>	<i>38.7</i>	<i>53.8</i>	<i>30.4</i>	<i>49.0</i>	<i>45.3</i>	<i>47.2</i>	<i>45.7</i>
TAKINGS FROM ACCOMMODATION (\$'000)												
<i>March quarter 1993</i>	<i>n.p.</i>	<i>n.p.</i>	<i>1,367</i>	<i>1,797</i>	<i>291</i>	<i>2,089</i>	<i>1,798</i>	<i>344</i>	<i>2,142</i>	<i>16,443</i>	<i>5,626</i>	<i>22,069</i>
<i>1994—</i>												
January	679	79	757	1,123	139	1,262	1,084	96	1,180	8,974	2,202	11,176
February	238	54	292	374	78	452	414	92	506	3,738	1,843	5,581
March	344	65	409	445	93	539	469	101	570	4,472	2,071	6,543
<i>March quarter 1994</i>	<i>1,260</i>	<i>198</i>	<i>1,458</i>	<i>1,942</i>	<i>310</i>	<i>2,252</i>	<i>1,967</i>	<i>289</i>	<i>2,256</i>	<i>17,183</i>	<i>6,116</i>	<i>23,299</i>

(a) See Explanatory Notes 11 and 14.

TABLE 11 — VISITOR HOSTELS BY STATISTICAL DIVISION, VICTORIA

Particulars	Melbourne (SD)	Wimmera and Ovens-Murray (SDs)	Balance of State	Total Victoria
ESTABLISHMENTS, CAPACITY AND EMPLOYMENT				
<i>March quarter 1993—</i>				
Establishments	15	8	19	42
Bed spaces	1,287	631	745	2,663
Employment (persons)	64	40	41	145
<i>March quarter 1994—</i>				
Establishments	15	9	25	49
Bed spaces	1,240	631	918	2,789
Employment (persons)	66	39	55	160
GUEST NIGHTS				
<i>March quarter 1993</i>	79,221	9,798	20,646	109,665
<i>1994—</i>				
January	29,830	2,782	7,885	40,497
February	26,222	2,994	6,589	35,805
March	27,000	5,701	8,672	41,373
<i>March quarter 1994</i>	83,052	11,477	23,146	117,675
BED OCCUPANCY RATES (per cent)				
<i>March quarter 1993</i>	69.1	17.3	30.8	46.0
<i>1994—</i>				
January	77.6	14.2	27.7	46.8
February	75.5	16.9	25.6	45.8
March	70.2	29.1	30.5	47.9
<i>March quarter 1994</i>	74.4	20.2	28.0	46.9
GUEST ARRIVALS				
<i>March quarter 1993</i>	24,425	3,821	11,147	39,393
<i>1994—</i>				
January	11,521	1,006	4,400	16,927
February	9,646	1,067	3,072	13,785
March	10,294	1,977	4,125	16,396
<i>March quarter 1994</i>	31,461	4,050	11,597	47,108
AVERAGE LENGTH OF STAY (days)				
<i>March quarter 1993</i>	3.2	2.6	1.9	2.8
<i>1994—</i>				
January	2.6	2.8	1.8	2.4
February	2.7	2.8	2.1	2.6
March	2.6	2.9	2.1	2.5
<i>March quarter 1994</i>	2.6	2.8	2.0	2.5
TAKINGS FROM ACCOMMODATION (\$'000)				
<i>March quarter 1993</i>	872	98	237	1,207
<i>1994—</i>				
January	393	37	105	535
February	346	35	86	467
March	357	62	107	526
<i>March quarter 1994</i>	1,096	134	298	1,529

EXPLANATORY NOTES —continued

DEFINITIONS —continued

9 *Total caravan park capacity* comprises *On-site vans*, *Other powered sites*, *Unpowered sites* and *Cabins*, etc.

10 *Room nights available*. The number of guest rooms available multiplied by the number of days for which they were available during the survey period. Includes operating periods only for establishments closing (other than for seasonal reasons) or opening during the survey period.

11 Occupancy in terms of *Room nights*, *Unit nights* or *Site nights occupied* refers to the total number of nights each guest room, holiday unit or caravan park site, etc. was occupied during the survey period.

NOTE: From September quarter 1988, caravan park sites, etc. permanently reserved for 2 months or more at the end of the survey period but only casually occupied by their tenants have been recorded continuously as *Site nights occupied* irrespective of whether the tenants of individual sites were in residence on any particular night. (See also paragraph 14 below). Previously, usage of these sites was recorded as *Site nights occupied* only when their tenants were in the park. Total site occupancy rates from September quarter 1988 are therefore not comparable with those from previous quarters.

12 Occupancy in terms of *Guest nights* refers to the total number of nights each paying guest stayed during the survey period.

13 *Sites occupied by long-term guests*. The total number of sites, etc. occupied at the end of the survey period by guests who have stayed continuously for 2 months or more.

14 *Other sites permanently reserved*. The total number of powered and unpowered sites, on-site vans and cabins, etc. continuously let for 2 months or more by the end of the survey period to tenants who occupy the sites only on a casual or sporadic basis. Separate data for this item are available only from September quarter 1992.

15 *Occupancy rates* represent occupancy expressed as a percentage of total capacity available during the survey period — e.g.

$$\text{Room occupancy rate (\%)} \text{ for the period} = \frac{\text{Room nights occupied}}{(\text{Guest rooms}) \times (\text{No. of days in the period})} \times 100$$

providing that, for establishments closing (other than for seasonal reasons) or opening during the period, the denominator of the above expression includes only operating periods.

16 *Guest arrivals*. The total number of paying guests counted only on the first night they stayed at the accommodation establishment.

17 *Unit lettings*. The total number of times a holiday flat, unit or house was occupied by a new tenant, counted only on the first night it was occupied by the new tenant.

18 *Average length of stay* is expressed in number of days and calculated:

- for hotels, motels and guest houses and for visitor hostels, by dividing *Guest nights* by *Guest arrivals* and
- for holiday flats, units and houses, by dividing *Unit nights occupied* by *Unit lettings*.

19 *Takings from accommodation*. Revenue received from the provision of accommodation. Takings from meals are excluded. Takings from accommodation for each month generally represent the takings received during that month. Where payments are received in advance of, or after, the provision of accommodation to guests, the monthly figure for takings from accommodation may not necessarily bear a direct relationship to the number of guests accommodated during the month. Rental and storage fees paid to caravan parks for the keeping of private vans in parks are included in the takings of the month they are received.

EXPLANATORY NOTES

INTRODUCTION

1 This publication contains data for Victoria from a quarterly survey of tourist accommodation establishments. The period covered by the latest survey is the 3 months ended 31 March 1994.

SCOPE

2 Tourist accommodation establishments currently included in the survey comprise two groups:

- Establishments which provide predominantly short-term accommodation (i.e. for periods of less than 2 months) to the general public. These include:

Hotels, motels and guest houses, with facilities being hotels licensed to operate a public bar and motels, private hotels and guest houses all of which provide a bar (or shower) and toilet in most guest rooms and have breakfast available for guests.

NOTE: From December quarter 1993, hotel, motel and guest house establishments with fewer than five rooms have been formally excluded from the scope of this statistical collection. This change in scope resulted in the exclusion of 23 establishments which in the September quarter 1993 Survey aggregates for Victoria represented 2.2 per cent of hotel, motel and guest house establishments but accounted for only 0.2 per cent of accommodation capacity and less than 0.1 per cent of occupancy and takings.

Holiday flats, units and houses (excluding establishments predominantly operated on a time share basis) which are operated by owners or managers who have sole letting rights to at least five flats, units or houses or by real estate agents for short-term letting. They are mainly self-contained in terms of cooking, bath (or shower) and toilet facilities and do not have breakfast available for guests. Data for holiday flats, units and houses include short-term owner occupation as well as paying guest occupation.

Visitor hostels which provide accommodation to visitors on a bed basis (rather than by the room). This category does not include establishments providing charity type accommodation (e.g. Salvation Army hostels) nor hotels, motels and guest houses without in-room facilities which provide accommodation on a per room basis.

- *Caravan parks* which provide either predominantly short-term (i.e. for periods of less than 2 months) or predominantly long-term (i.e. for periods of 2 months or more) accommodation to the general public and which provide powered sites for caravans and toilet, shower and laundry facilities for guests.

3 Data collected and published for each type of establishment (other than holiday flats, units and houses) include both long-term and short-term guests at these establishments.

4 Establishments which provide more than one type of accommodation (e.g. a motel with attached caravan park) are treated as two or more separate establishments. However, self-contained units, flats, cabins, etc. attached to hotels, motels or to caravan parks are included in the capacity for those establishments and not treated as separate holiday flat, unit or house establishments.

DEFINITIONS

5 *Number of establishments.* For hotels, motels and guest houses, caravan parks and visitor hostels, the number of establishments within the scope of the survey which operated for any part of the survey period, or which closed temporarily for the quarter for seasonal reasons.

6 *Number of letting entities.* For holiday flats, units and houses, the number of owners, managers or real estate agents within the scope of the survey who operated for any part of the survey period.

7 Capacity in terms of *Guest rooms, Bed spaces, Holiday units* or *Caravan park sites, etc.* is the maximum number available to accommodate paying guests during the survey period. Capacity closed temporarily for seasonal reasons is included.

8 *Bed spaces.* Three-quarter beds are counted as one bed space; double beds as two bed spaces. Cots are excluded.

EXPLANATORY NOTES—continued

DEFINITIONS—continued

20 *Star grading.* The grading of hotels and motels with facilities based on the classification system used by members of the Australian Automobile Association (AAA). The gradings are allocated according to a points system based on the amenities and facilities available to guests. Details of the grading scheme are contained in the RACV-RAASA members' publication *Accommodation Australia*, or the individual tour guides produced by members of the AAA. For the purpose of classifying establishments to a star grading in this publication, 'half' star gradings are ignored (e.g. a two and a half star grading has been shown as two star).

21 *Employment.* The number of persons working at accommodation establishments at the end of the survey period (including working proprietors and those working on other than accommodation activities).

AUSTRALIAN STANDARD
GEOGRAPHICAL
CLASSIFICATION

22. Statistics presented in this publication have been classified according to the Australian Standard Geographical Classification (ASGC), Edition 2.3. This classification incorporates a number of hierarchic structures of geographic areas. The appropriate spatial units of the main structure of the ASGC used in this publication are defined as follows.

Statistical Local Areas (SLAs) are in most cases either identical with, or have been aggregated to, the previously published whole or part legal Local Government Areas (LGAs) comprising boroughs (B), cities (C), municipalities (M), rural cities (RC), shires (S) and towns (T). In aggregate, SLAs cover the whole of the State without gaps or overlaps. In some cases, legal LGAs overlap Statistical Subdivision boundaries and therefore comprise two SLAs (Part A and Part B).

Statistical Subdivisions (SSDs). These consist of one or more SLAs and form the intermediate size spatial unit for the presentation of regional data.

Statistical Divisions (SDs). These consist of one or more SSDs. Where SSDs are not shown for statistical purposes, statistical local areas are shown ordered alphabetically within statistical divisions. The Divisions are designed to be relatively homogeneous regions characterised by identifiable social and economic units within the region, under the unifying influence of one or more major towns or cities.

Statistical Districts. To provide comparable statistics over a period of time, Statistical Districts have been defined around selected urban centres, with a population of 25,000 or more, experiencing urban growth beyond the legal local government area boundaries. Those districts are intended to contain the anticipated urban spread over the next 20 years.

From 1 January 1991, Victoria was redefined into eleven Statistical Divisions (some of which were re-named), a reduction of one. Because this involved substantial boundary alterations with consequent apparent movement of establishments across Statistical Divisions, great care should be exercised if attempting to compare data published before the change with that published after it.

UNPUBLISHED STATISTICS

23 The ABS may make available on request certain unpublished tourist accommodation statistics. A charge may be made for this information.

RELATED PUBLICATIONS

24 Publications for Australia, and each State and Territory, are released by the respective offices of the ABS. Tourist accommodation statistics for past quarters are available on request.

25 Other ABS publications which may be of interest include:

Directory of Tourism Statistics, 1991 (1130.0) (irregular)

Overseas Arrivals and Departures, Australia (3401.0) (monthly)

Tourism Indicators Australia (8634.0) (quarterly)

Tourist Accommodation, Australia (8635.0) (quarterly)

26 Current publications produced by the ABS are listed in the *Catalogue of Publications and Products* (1101.0). The ABS also issues the *Publications Advice* (1105.0) on Tuesdays and Fridays which lists publications to be released in the next few days. Both the *Catalogue* and *Publications Advice* are available from any ABS office.

EXPLANATORY NOTES —continued

SYMBOLS AND
OTHER USAGES

n.a.	not available
n.p.	not available for publication but included in totals where applicable
r	figure or series revised since previous issue
..	not applicable
—	nil or rounded to zero
(B)	Borough
(C)	City
(RC)	Rural City
(S)	Shire
(T)	Town

27 Where figures have been rounded, discrepancies may occur between totals and the sums of the component items.

ELECTRONIC SERVICES

DISCOVERY	Key *656# for selected current economic, social and demographic statistics.
PC-TELESTATS	This service delivers major economic indicator publications ready to download to your computer on the day of release. Phone (06) 252 5408.
PC-AUSSTATS	Thousands of up-to-date time series are available on this ABS on-line service. For further information, phone (03) 615 7769.
CDA91	CDA91 is a CD-ROM (COMPACT DISC - READ ONLY MEMORY) product which allows desktop analysis of 1991 Census Data for small areas. CDA91 enables users to select data and geographic areas and view this information as tables, maps or graphs and link this census information with other data.

For further information regarding CDA91, phone (03) 615 7769.

RECORDED MESSAGE SERVICES

0055 26400

Consumer Price Index
National Accounts
Balance of Payments
Labour Force Estimates
Average Weekly Earnings
Estimated Resident Population

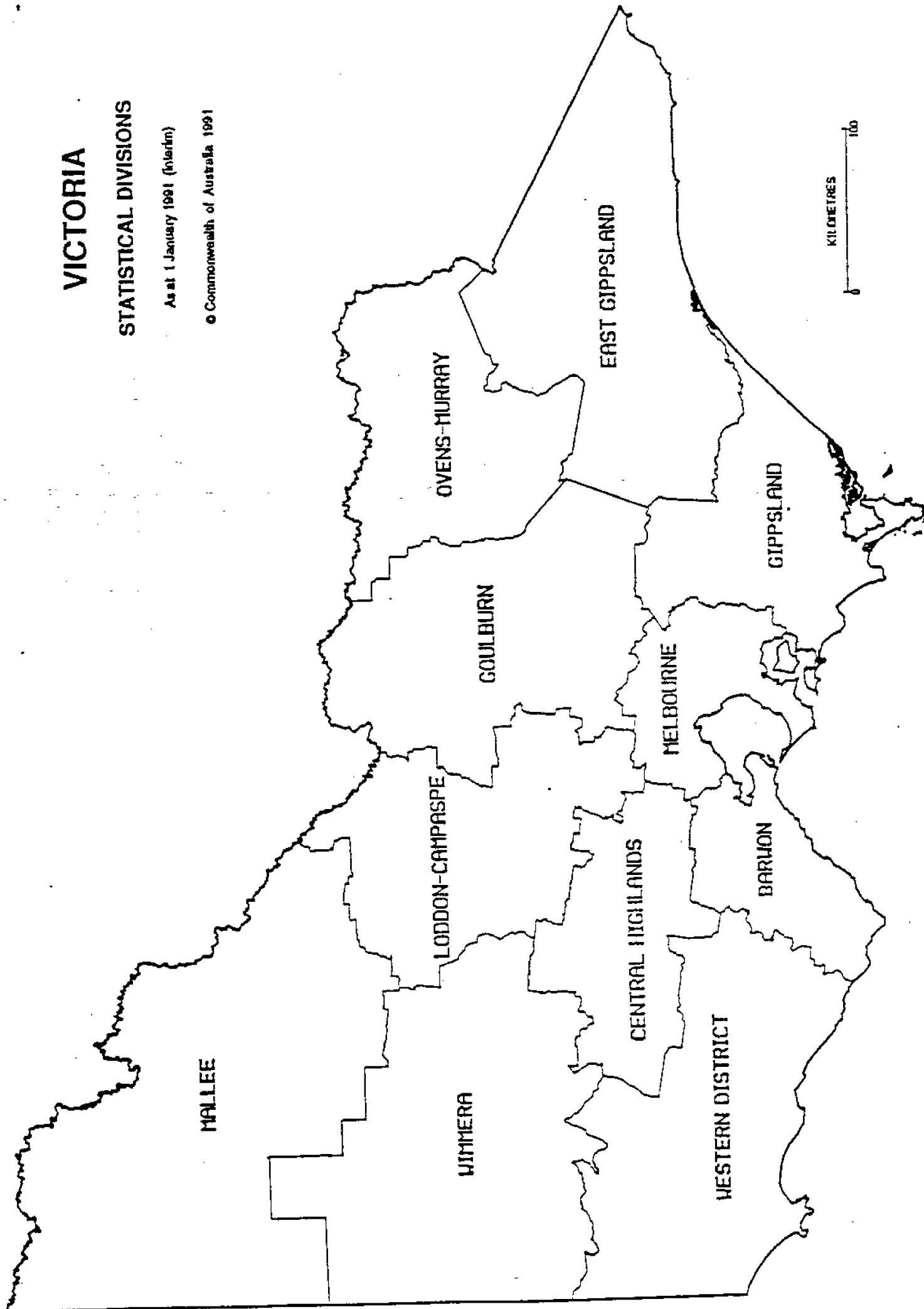
STUART JACKSON
 Deputy Commonwealth Statistician

VICTORIA

STATISTICAL DIVISIONS

As at 1 January 1991 (interim)

© Commonwealth of Australia 1991





MELBOURNE STATISTICAL DIVISION

Statistical Local Areas

As at September 1992

City (C) Shire (S)

© Commonwealth of Australia 1992





For more information ...

The ABS publishes a wide range of statistics and other information on Australia's economic and social conditions. Details of what is available in various publications and other products can be found in the *ABS Catalogue of Publications and Products* available at all ABS Offices (see below for contact details).

Information Consultancy Service

Information tailored to special needs of clients can be obtained from the Information Consultancy Service available at ABS Offices (see Information Inquiries below for contact details).

National Dial-a-Statistic Line

0055 86 400

(Steadycom P/L, premium rate 25c/21.4 secs.)

This number gives 24-hour access, 365 days a year for a range of statistics.

Electronic Data Services

DISCOVERY (Key *656#): The ABS intends discontinuing its statistical information service on DISCOVERY. Please contact Peter Davidson (Phone 06 252 6684) to discuss possible alternatives for acquiring statistics or if you wish to comment on this proposal. For details on electronic data services available, contact Information Services in any of the ABS Offices (see Information Inquiries below for contact details).

Bookshops and Subscriptions

There are over 400 titles of various publications available from ABS bookshops in all ABS Offices (see below Bookshop Sales for contact details). The ABS also provides a subscription service through which nominated publications are provided by mail on a regular basis at no additional cost (telephone Publications Subscription Service toll free on 008 02 0608 Australia wide).

Sales and Inquiries

Regional Offices	Information Inquiries	Bookshop Sales
SYDNEY (02)	268 4611	268 4620
MELBOURNE (03)	615 7000	615 7829
BRISBANE (07)	222 6351	222 6350
PERTH (09)	323 5140	323 5307
ADELAIDE (08)	237 7100	237 7582
HOBART (002)	20 5800	20 5800
CANBERRA (06)	207 0326	207 0326
DARWIN (089)	43 2111	43 2111
National Office		
ACT (06)	252 6007	008 020 608

ABS Email Addresses

Keylink	STAT.INFO@ABS
X.400	(C:AU:A:TELMEMO.O:ABS.SN:INFO.FN:STAT)
Internet	STAT.INFO@ABS. TELEMEMO.AU



Information Services, ABS, PO Box 10, Belconnen ACT 2616

